

Energy transport and heat production in quantum engines.

Liliana Arrachea

*Departamento de Física “J. J. Giambiagi” FCEyN,
Universidad de Buenos Aires, Pabellón I,
Ciudad Universitaria (1428) Buenos Aires, Argentina.
lili@df.uba.ar*

Michael Moskalets

*Department of Metal and Semiconductor Physics,
NTU “Kharkiv Polytechnic Institute”,
61002 Kharkiv, Ukraine
moskalets@kpi.kharkov.ua*

(Dated: March 14, 2013)

Abstract

A quantum dot driven by two ac gate potentials oscillating with a phase lag may be regarded as a quantum engine, where energy is transported and dissipated in the form of heat. In this chapter we introduce a microscopic model for a quantum pump and analyze the fundamental principle for the conservation of the charge and energy in this device. We also present the basics of two well established many-body techniques to treat quantum transport in harmonically time-dependent systems. We discuss the different operating modes of this quantum engine, including the mechanism of heat generation. Finally, we establish the principles of quantum refrigeration within the weak driving regime. We also show that it is possible to achieve a regime where part of the work done by some of the ac fields can be coherently transported and can be used by the other driving voltages.

Contents

I. Introduction	3
II. Background	6
A. Model	6
B. Conservation laws and instantaneous currents	9
1. Particle currents and the conservation of the charge	9
2. Energy currents, power, and the conservation of the energy	10
C. Continuity equations, dc charge and energy currents and mean powers	12
D. Heat current	12
III. State of the art	14
A. Green's functions formalism	14
1. Expectation values of observables and Green's functions	14
2. Brief review of the theory of the non-equilibrium Green's functions	15
3. Green's functions and Dyson's equations in our problem	17
4. Perturbative solution of the Dyson's equation	21
B. Scattering matrix formalism	21
1. General formalism	22
2. Floquet scattering matrix	23
3. Adiabatic scattering	24
C. Floquet scattering matrix versus Green's function	25
D. Final expressions for the dc currents and powers	26
1. Particle currents and the conservation of the charge	26
2. Particle currents within the adiabatic approximation	28
3. Particle currents within perturbation theory	29
4. Energy and heat currents	30
5. Mean power developed by the fields	31
E. Technical summary	32
IV. Results and critical discussion	32
A. Heating of the reservoirs by the quantum pump	33

1. Heat current at weak driving, $T = 0$	34
2. Mean power at weak driving, $T = 0$	35
3. Conservation of the energy	36
B. Energy exchange between external forces	36
C. Directed heat transport at finite temperature	37
1. Adiabatic heat currents	39
V. Summary	40
VI. Future perspective	41
VII. Acknowledgments	42
VIII. Bibliography	42

I. INTRODUCTION

In 1824 the french physicist Nicolas Léonard Sadi Carnot, better known as Sadi Carnot, in “Reflections on the Motive Power of Fire” settled the principles of the modern theory of Thermodynamics by pointing out that motive power (concept later identified as work) is due to the fall of caloric (concept later identified as heat) from a hot to cold body (working substance). These ideas, that provided the scientific support for the technological jump based in the steam engine were not well understood at that time. They were actually discovered and further elaborated thirty years later by the German Rudolf Clausius and the British William Thomson (Lord Kelvin). The fundamental principles ruling the operation of the thermal engines were then summarized in the two basic laws of Thermodynamics. While the first law simply stresses the conservation of the energy, the second one deals with the subtle distinction between a kind of energy that can be used and another one that is dissipated in a physical process, as well as on the balance between both of them.

In 1851 Lord Kelvin also discovered Thomson effect, and showed that it was related to other thermoelectric phenomena: Peltier and Seebeck effects. Unlike Carnot’s machines, these effects are related to non-equilibrium processes. However, they also bring about the conceptual distinction between different kinds of energies: one that is transported in some direction due to a voltage or temperature gradient, but being different from the Joule heating

in the sense that the first one is reversible while the latter involves dissipation and, thus, irreversible effects.

Nowadays, we are witnessing a technological trend towards an increasing miniaturization of the electronic components. This is accompanied by a significant activity within communities of the basic sciences, in the search of a better understanding of the behavior of materials and devices with sizes in the range between 1nm to $10\mu\text{m}$ as fundamental pieces of electronic circuits. Paradigmatic examples are the quantum dots fabricated in the interfaces of semiconductor structures where confining gates for electrons and circuits are printed by means of nanolithography within an area of a few μm^2 (see Fig. 1). Due to the small scale of these systems, they present some physical features that resemble the molecules. In particular, the landscape of their spectra contains well defined quantum levels where electrons propagate almost perfectly preserving the phase of their wave functions. However, they are not isolated from the external world but coupled to the substrate, gates, wires and external fields that induce the transport of electrons. For this reason, they are classified as “open quantum systems” that operate out-of-equilibrium conditions. The “external world”, instead, contains pieces that act as macroscopic reservoirs with which the “small quantum systems” exchange particles and energy. Due to the mixed nature of these systems, the concepts of classical electrodynamics and thermodynamics cannot be simply applied to them and theoretical tools that are amenable to capture their quantum properties as well as the coupling to their environment are necessary.

In this chapter we focus in a particular kind of devices named “quantum pumps”. They have been realized experimentally, precisely, in quantum dots, where ac voltages are applied at their walls, and a current with a dc component is generated in the absence of a stationary voltage difference (see Figure 1). From the theoretical point of view one of the interests in these systems is that they can be described in terms of simple Hamiltonians, including macroscopic pieces that represent the wires connected to the quantum dot as well as explicit terms for the time dependent forces that induce the transport process. The latter feature makes an important difference, in comparison with setups where the transport is induced by means of a stationary voltage difference. This is because in such systems the work of the forces that keep such a bias fixed is not explicitly taken into account in the model Hamiltonian but introduced as a boundary condition.

We can imagine situations in which the macroscopic wires connected at the quantum dot

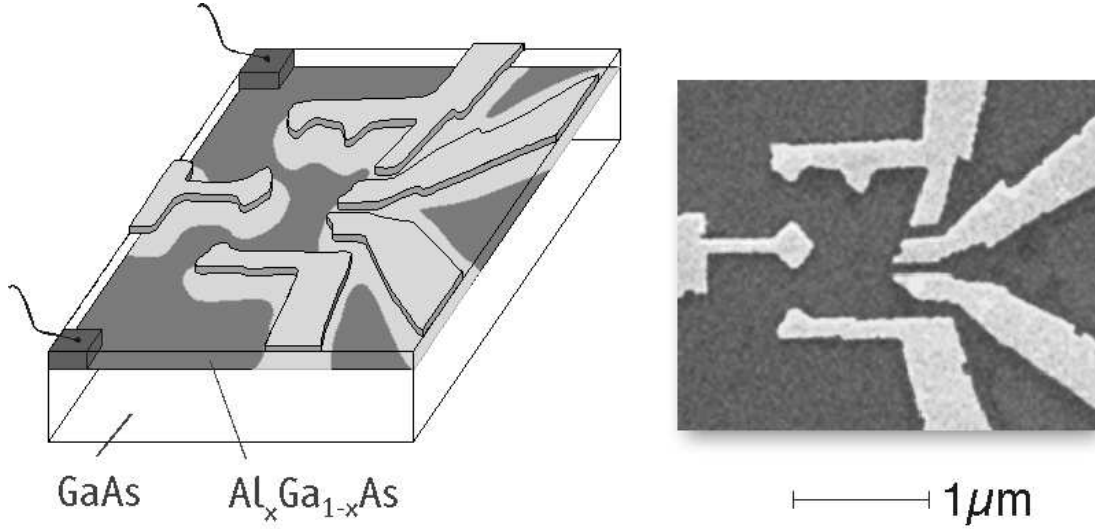


FIG. 1: Quantum dots fabricated with nanolithography in a semiconductor interface. The two leads going upwards and downwards make the contact between the dot and external reservoirs. The gate at the left can be used to apply a voltage to introduce a rigid shift of the positions of the energy levels of the dot. The two extra leads connected at the right hand wall of the dot can be used to apply ac potentials at those points. Figure by Charles Marcus, Mesoscopic Lab, Harvard University.

are at different temperatures. Additionally, the time dependent forces do make work on the system. Thus, we can regard the quantum pump as a microscopic engine where heat can be exchanged between two sources at different temperatures, while work is provided to the system and part of the energy is dissipated. As we will show, such an engine could even operate as a refrigerator, where there is a net heat flow from the reservoir at the lowest temperature to the one at the highest one. The goal of this chapter is to introduce theoretical tools for the analysis of the fundamental conservation laws at the microscopic scale, the explicit evaluation of the power developed by the intervening forces and the distinction between reversible flows and dissipated energy.

This chapter is organized as follows. In the next section we introduce a simple microscopic model for a quantum pump and we will discuss the fundamental principle of the conservation of the charge and the energy in this device. In section III we introduce the basics of two well established many-body techniques to treat quantum transport in harmonically time-dependent systems. The first one starts from the explicit microscopic Hamiltonian for the

system, forces and environment which is solved by recourse to non-equilibrium Green's functions. While the second one is based in the notion of scattering processes that the electrons experience as they cross through a quantum system under ac driving. Although this chapter is self-contained, we will not include a complete tutorial on these two techniques but we adopt a practical point of view, presenting just the main ideas while we defer the reader to more specific literature on many-body techniques for further details. In section IV we present explicit expressions for the energy flows in terms of the Green's functions and the scattering matrix elements introduced in section III. We also discuss the nature of the different components contributing to the total energy flow. Section V is devoted to a summary of the different operating modes that we were able to identify in our quantum engine. Finally, in section VI we conclude with a discussion of the possible directions to extend these ideas.

II. BACKGROUND

A. Model

We start by defining explicit Hamiltonians to describe the quantum electronic system as well as its environment. For the sake of simplicity, let us focus in a system like the one sketched in Fig 2 where the central system C , on which the time-dependent forces are acting, is placed between two wires: one located at the left (L) and the other at the right (R) of C . We can identify C with the quantum dot of Fig. 1, with the two ac voltages applied at the two extra leads connected at the wall. The L and R reservoirs of Fig. 3 correspond to the up and down ones in Fig. 1.

Along this chapter, we make the following simplifying assumptions on the system: (i) We shall take into account only the two wires as the external environment for the central system and disregard other effects like, for example, the influence of the phonons of the substrate. Such a simplification is expected to be reasonable if we concentrate on the behavior at sufficiently low temperatures. (ii) We also assume that the electrons do not experience any kind of many-body interactions, like the Coulomb repulsion between electrons. This assumption is justified in the description of the metallic wires where we can expect an efficient screening but it is justified within the system C only when the structure is strongly

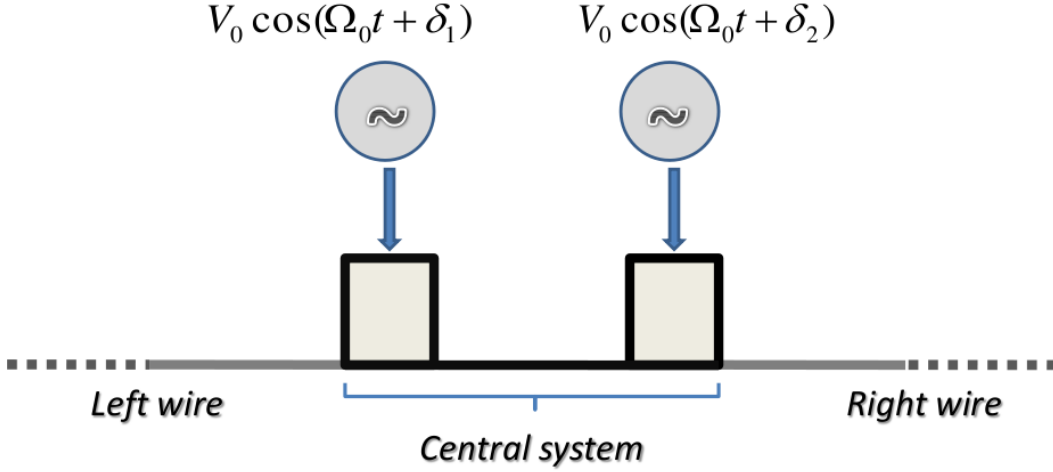


FIG. 2: Sketch of the setup. The central system is connected to two infinite wires, which play the role of macroscopic reservoirs. In this example, the central system contains a profile of two barriers at which ac fields that oscillate with the same amplitude V_0 and frequency Ω_0 , and a phase lag $\delta_2 - \delta_1$.

connected to the wires and allows for the screening of the wires to penetrate into it. In this context, the spin degrees of freedom of the electrons behave independently of one another. For this reason, in order to simplify the notation, we do not consider them explicitly. In the case of considering them we must simply write a factor 2 in front of the final expressions for the currents and densities. The full Hamiltonian reads:

$$H(t) = H_L + H_C(t) + H_R + H_c, \quad (1)$$

where

$$H_\alpha = \sum_{k\alpha} \varepsilon_{k\alpha} c_{k\alpha}^\dagger c_{k\alpha}, \quad (2)$$

being $\alpha = L, R$, are Hamiltonians of free spinless electrons that represent the wires. We stress that these systems are macroscopic, i.e. they contain a very large number of degrees of freedom and are in thermodynamic equilibrium. This means that they are completely characterized by their density of states

$$\rho_\alpha(\omega) = 2\pi \sum_{k\alpha} \delta(\omega - \varepsilon_{k\alpha}/\hbar), \quad (3)$$

and the Fermi distribution function:

$$f_\alpha(\hbar\omega) = \frac{1}{e^{\beta_\alpha(\hbar\omega - \mu_\alpha)} + 1}, \quad (4)$$

with $\beta_\alpha = k_B T_\alpha$. The second term, $H_C(t)$, describes the quantum structure under consideration as well as the time-dependent gate potentials acting on it. The ensuing Hamiltonian depends on the geometry of the structure as well as on the interactions that we want to take into account. In the absence of many-body interactions, this system may be described by a single-particle Hamiltonian of the form:

$$H_C(\mathbf{r}, t) = -\frac{\hbar^2 \nabla^2}{2m} + U(\mathbf{r}) + \sum_{l=1}^M \delta(\mathbf{r} - \mathbf{R}_l) eV_l(t), \quad (5)$$

being m the mass of an electron, which corresponds to a finite number of time-dependent potentials that we assume have the simple single-harmonic dependence: $V_l(t) = V_0 \cos(\Omega_0 t + \delta_l)$. The potential $U(\mathbf{r})$ contains the information of the confining walls, barriers and defects of the structure. For a detailed discussion of the conservation laws and for treating the problem with the Green's function formalism, it is convenient to express this Hamiltonian in second quantization. To this end we must define an appropriate single particle basis to represent the relevant operators. As the structure under study occupies a reduced region of the space, it is comfortable to work with a single particle basis that is labeled by spacial coordinates, like that defined by the Wannier functions. It is, thus, useful to work on a discrete lattice containing a finite number (N) of sites and a basis of single-electron states that are localized on the lattice positions. The resulting Hamiltonian in second quantization corresponds to a tight-binding model. For simplicity, we consider this model in one-dimension (1D), although this is not an essential assumption:

$$H_C(t) = \sum_{l=1}^N [\varepsilon_l + eV_l(t)] c_l^\dagger c_l - w \sum_{l=1}^{N-1} (c_l^\dagger c_{l+1} + H.c.), \quad (6)$$

where the term with $w = \langle l | (\hbar^2/2m) \partial^2 / \partial x^2 | l+1 \rangle$, being $|l\rangle$ single-electron basis state localized at the lattice position “ l ”, describes the kinetic energy of the electrons through jumping processes between nearest-neighbor sites of the underlying lattice. The term with $\varepsilon_l = \langle l | U(x) | l \rangle$, defines a static energy profile for the structure: it contains the information of the existence of barriers and wells. For a system with impurities, this profile can be defined in terms of a random amplitude and this model reduces to the Anderson model. The term

with $V_l(t) = \langle l | \sum_{j=1}^M \delta(x_l - x_j) V_0 \cos(\Omega_0 t + \delta_j) | l \rangle$ represents the time dependent gates, being finite at the M pumping centers and vanishing otherwise. Finally, the term H_c describes the contacts between the central system and the reservoirs. In our simple 1D model for the central structure the L lead is connected to the first site, $l = 1$, and the R to the last site, $l = N$, of the central structure. The Hamiltonian reads:

$$H_c = -w_{cL} \sum_{kL} (c_{kL}^\dagger c_1 + H.c.) - w_{cR} \sum_{kR} (c_{kR}^\dagger c_N + H.c.), \quad (7)$$

which describes hopping processes between the states $k\alpha$ within the wires and the points of C at which the contact between the two systems is established.

Before closing this subsection, let us mention that, depending on the physical problem under consideration, there may be other time-dependent terms in the Hamiltonian. For systems with ac voltages applied at the L and R wires, we should consider a dispersion relation with a time-dependent component in addition to the static one, $\varepsilon_{k\alpha}^0$. By recourse to a gauge transformation, it can be seen that this type of ac voltages can, equivalently, be included in a time-dependent phase in the contact hopping w_c (see Jauho et al. 1994). Another possible time-dependent term is that originated by an electric field derived from a time-dependent vector potential $\mathbf{A}(t)$ (see Arrachea 2002). That physical situation would take place, for example, when the central system is bended and closed into an annular geometry threaded by a time-dependent magnetic flux. In terms of the Hamiltonian this introduces a shift: $\mathbf{p} \rightarrow \mathbf{p} - (e/c)\mathbf{A}(t)$ in the momentum of the electrons, being c the velocity of light. In the tight-binding basis this translates into time-dependent phases in the hopping parameter w of $H_C(t)$ along with the periodic boundary condition $N + 1 \equiv 1$. Finally, the study of the coupling to external classical radiation fields is usually treated within the so called dipolar approximation, which in our second quantization language results in a diagonal voltage profile $V_j(t)$ as in Eq. (6) with $V_j \sim jV_0$, with V_0 constant and $\delta_j = \delta, \forall j$ (see Kohler et al. 2005).

B. Conservation laws and instantaneous currents

1. Particle currents and the conservation of the charge

A consistent way to define expressions for the electronic currents along the different pieces of the structure is starting from the evolution of the electronic density $n_l = c_l^\dagger c_l$. The

variation of n_l is due to the difference between the charge flow exiting and entering the infinitesimal volume that encloses that point:

$$-e \frac{d}{dt} \langle n_l \rangle = J_l(t) - J_{l-1}(t), \quad (8)$$

where $J_l(t)$ denotes the current exiting the site l towards the neighboring site $l + 1$. We denote with a positive sign the flows pointing from left to right. The variation in time of the local charge can be calculated within the Heisenberg picture by recourse to the Eherenfest theorem:

$$e \frac{d}{dt} \langle n_l \rangle = -\frac{ie}{\hbar} \langle [H, c_l^\dagger(t) c_l(t)] \rangle. \quad (9)$$

Thus, the explicit evaluation of the above commutator defines an explicit expression for the current. If we consider a site within C we obtain:

$$J_l(t) = \frac{iew}{\hbar} \langle c_l^\dagger(t) c_{l+1}(t) - c_{l+1}^\dagger(t) c_l(t) \rangle. \quad (10)$$

It is easy to verify that the above expression coincides with the mean value of the operator $e\mathbf{v}$, being \mathbf{v} the velocity expressed in second quantization in the basis of localized functions. Similarly, if we consider the contact between C and one of the reservoirs we get the following expression for the current that exits the reservoir α :

$$J_\alpha(t) = \frac{iew_{c\alpha}}{\hbar} \sum_{k\alpha} \langle c_{k\alpha}^\dagger(t) c_{l\alpha}(t) - c_{l\alpha}^\dagger(t) c_{k\alpha}(t) \rangle, \quad (11)$$

where $l\alpha = 1, N$ for $\alpha = L, R$.

2. Energy currents, power, and the conservation of the energy

In order to define energy currents, we proceed along a similar line as before. In this case, we analyze the evolution of the energy density at a given elementary volume and write the equation of the conservation of the energy. As our Hamiltonian $H_C(t)$ contains terms involving positions up to nearest-neighbors, the smallest volume for analyzing the evolution of the energy density in our 1D lattice is that enclosed by a box confining a bond of nearest-neighbor sites (see Figure 3). If we denote by $E_{l,l+1}$ the total energy stored within such a box, the equation for the conservation of the energy reads:

$$\frac{dE_{l,l+1}}{dt} = J_{l+1}^E(t) - J_l^E(t) + P_l(t) + P_{l+1}(t), \quad (12)$$

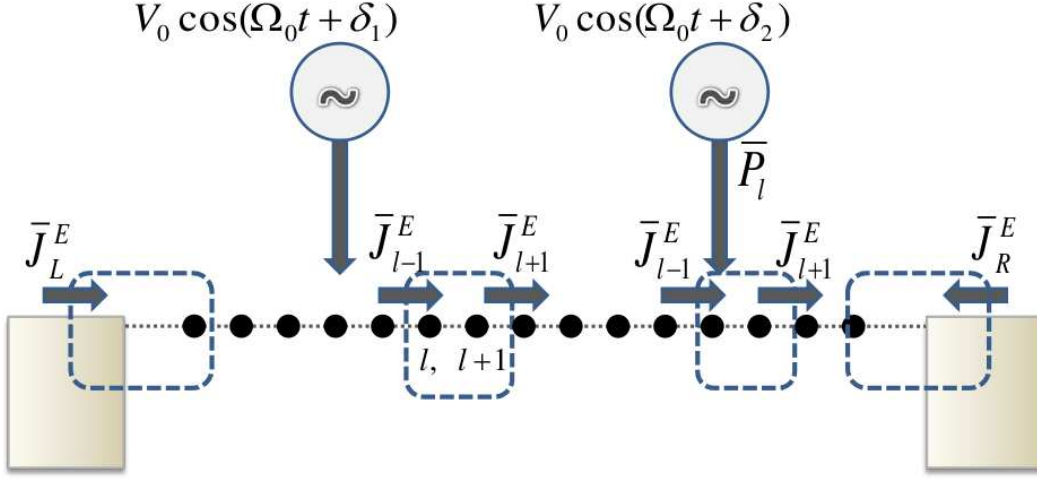


FIG. 3: Analysis of the energy balance in our setup. The dashed boxes enclose the elementary volume of the system where the evolution of the energy is studied. It contains two sites of the underlying lattice. The arrows indicate the direction that we have defined as positive for energy currents along the different pieces of the system as well as the powers done by the fields.

where the first two terms denotes the difference between outgoing (from $l + 1$ to $l + 2$) and incoming (from $l - 1$ to l) flows, with the same sign convention as in the case of charge flows, while the last two terms denote the power done by the external fields, which are defined as positive when it is provided by the forces. The latter terms vanish if the time-dependent gate potentials are not acting at the points l and $l + 1$ enclosed by the box. Our box can also enclose the contact bond between the reservoir α and the central system (see Fig. 3), in which case we get:

$$\begin{aligned} \frac{dE_{L,1}}{dt} &= J_1^E(t) - J_L^E(t) + P_1(t), \\ \frac{dE_{N,R}}{dt} &= -J_R^E(t) - J_{N-1}^E(t) + P_N(t), \end{aligned} \quad (13)$$

where $J_\alpha^E(t)$ denotes the energy flow that exits the reservoir α . As in the previous subsection, the explicit expressions for the flows and powers are derived by recourse to the Eherenfest

theorem:

$$\begin{aligned} \frac{dE_{l,l+1}}{dt} = & -\frac{i}{\hbar} \langle [H, (\varepsilon_l(t)c_l^\dagger(t)c_l(t) + \varepsilon_{l+1}(t)c_{l+1}^\dagger(t)c_{l+1}(t) - w\{c_l^\dagger(t)c_{l+1}(t) + c_{l+1}^\dagger(t)c_l(t)\})] \rangle \\ & + e \frac{dV_l(t)}{dt} \langle c_l^\dagger(t)c_l(t) \rangle + e \frac{dV_{l+1}(t)}{dt} \langle c_{l+1}^\dagger(t)c_{l+1}(t) \rangle, \end{aligned} \quad (14)$$

with $\varepsilon_l(t) = \varepsilon_l^0 + eV_l(t)$, and a similar expression for the volume enclosing the contact bonds between C and the reservoirs. From the evaluation of the previous terms, we obtain the explicit expressions for the energy currents:

$$J_{l+1}^E(t) = \frac{iw}{\hbar} [w \langle c_l^\dagger(t)c_{l+2}(t) - c_{l+2}^\dagger(t)c_l(t) \rangle - \varepsilon_{l+1}(t) \langle c_{l+1}^\dagger(t)c_{l+2}(t) - c_{l+2}^\dagger(t)c_{l+1}(t) \rangle], \quad (15)$$

$$J_\alpha^E(t) = \frac{iw_{c\alpha}}{\hbar} \sum_{k\alpha} \varepsilon_{k\alpha} \langle c_{k\alpha}^\dagger(t)c_{l\alpha}(t) - c_{l\alpha}^\dagger(t)c_{k\alpha}(t) \rangle, \quad (16)$$

and power developed by the ac voltages:

$$P_l(t) = e \frac{dV_l(t)}{dt} \langle c_l^\dagger(t)c_l(t) \rangle. \quad (17)$$

C. Continuity equations, dc charge and energy currents and mean powers

In the absence of sinks and sources, the average of the charge enclosed by any volume of the sample over one cycle with of period $\tau = 2\pi/\Omega_0$ must remain constant, which defines the following continuity equation for the dc charge current (microscopic Kirchoff law):

$$\bar{J}_l = \bar{J}_{l'} = J, \quad (18)$$

for arbitrary l, l' along C , where we denote $\bar{A} = 1/\tau \int_0^\tau dt A(t)$.

Analogously, for any volume enclosing lattice points running from $l+1, \dots, l'$ we get:

$$\bar{J}_l^E = \bar{J}_{l'}^E + \sum_{j=l+1}^{l'} \bar{P}_j, \quad (19)$$

where the last term defines the power done by all the voltages enclosed by the volume. The above equation reduces to a ‘‘Kirchoff law’’ for the dc energy current when we enclose a region that is free from the time-dependent voltages, in which case the last term vanishes.

D. Heat current

At this point, it is important to mention that the dc energy current \bar{J}^E defined above does not necessarily coincide with the heat current which we will denote J^Q . This is because

what is understood as “heat” is usually the energy transferred from one system to another as a consequence of a temperature difference. In order to understand this difference, let us consider that our reservoirs are at temperature $T = 0$, let us place our volume enclosing the contact between one reservoir and the central system and let us assume that we are not enclosing an ac local voltage within it. Now, let us analyze the following picture based on heuristic arguments that we shall better formalize it in subsequent sections. Let us assume that the ac voltages are so weak in amplitude and oscillate with such a low frequency that we can disregard the power they develop. Let us assume that, anyway, they are able to move a small portion of electrons with energies very close to the Fermi energy of the reservoirs μ , that we recall is the same for L and R . This weak motion give place to currents of particles and energy which, from the definitions (11) and (16), are approximately related through $J_\alpha^E(t) \sim (\mu/e)J_\alpha(t)$. The same relation holds for L as well as R reservoirs and a small current of particles may translate in a large current of energy, since μ can be large. The dc component of the charge current may be finite and should be positive in one reservoir and negative in the other one, indicating that there is a net flow of charge between L and R or vice versa. The above relation, therefore, tells us that there is a concomitant net flow of energy from a reservoir to the other one, in spite of the fact that we are assuming that both reservoirs are at zero temperature. One could complain that we have not taken into account the power done by the time-dependent fields which would tend to heat the system. However, let us recall that an appropriate choice of μ would allow us an arbitrary large value of the energy flow, against which we can disregard a contribution like (17) for weak and slow ac voltages. In summary, the above considerations lead us to conclude that there may exist a net energy flow which cannot be identified as “heat” but has rather a convective nature. In order to better quantify heat, it is thus natural to subtract from the energy flow, the convective component $(\mu/e)J$, i.e.:

$$J_l^Q = \overline{J}_l^E - \frac{\mu}{e}J, \quad J_\alpha^Q = \overline{J}_\alpha^E - \frac{\mu}{e}J. \quad (20)$$

Notice that, while the convective term is constant along all the pieces of the system due to the continuity of the charge, the heat and energy currents may have different values due to the contribution of the power done by the external voltages, see Eq. (19).

To give a more formal definition of the heat flow J_α^Q , let us consider the particle and the energy balances for a given reservoir α that is kept at fixed both the chemical potential

μ_α and the temperature T_α . If the charge current \bar{J}_α and the energy flow \bar{J}_α^E enter the reservoir α , then the number of particles and the energy of a reservoir should change. This, in turn, would change the chemical potential and the temperature of a reservoir. In order to keep μ_α fixed, the electrons have to be removed with the rate \bar{J}_α/e out of the reservoir. Therefore, while keeping μ_α constant we necessarily remove energy with rate $\mu_\alpha\bar{J}_\alpha/e$. We stress that the convective energy $\mu_\alpha\bar{J}_\alpha/e$ is taken out at equilibrium conditions, therefore, it can be reversibly given back. In general this energy does not coincide with energy flow \bar{J}_α^E entering the reservoir. To prevent heating of reservoir one needs additionally to take out the energy with rate $J_\alpha^Q = \bar{J}_\alpha^E - \mu_\alpha\bar{J}_\alpha/e$ without taking out particles. Since the reservoir can not produce work, the only way to remove the remaining energy is to put it in contact with other large body playing the role of a thermostat. The energy exchange between the reservoir α and the thermostat is essentially irreversible. For this reason we interpret this part of the total energy as “heat” and we identify J_α^Q as the heat flow. If the thermostat would be absent the temperature of a reservoir would change. As we will show J_α^Q can be directed either to the reservoir from the central system or back. Hence, in the absence of a thermostat, the reservoir can be either heated or cooled. We stress that the energy transported at the rate J_α^Q becomes “heat” only deep inside the macroscopic reservoir, where the electrons scattered by the dynamical central system, are able to equilibrate.

III. STATE OF THE ART

In this section we briefly review the many-body techniques to evaluate the currents and powers defined in the previous section.

A. Green’s functions formalism

1. Expectation values of observables and Green’s functions

The expectation value of any one-body observable, $\langle A(t) \rangle = \sum_{l,l'} \langle l' | A(t) | l \rangle \langle c_{l'}^\dagger(t) c_l(t) \rangle$, can be regarded as follows:

$$\langle \hat{A}(t) \rangle = -i \lim_{t' \rightarrow t} \sum_{l,l'} \langle l' | A(t) | l \rangle G_{l,l'}^<(t, t'), \quad (21)$$

being

$$G_{i,l'}^<(t, t') = i \langle c_l^\dagger(t') c_l(t) \rangle, \quad (22)$$

a “lesser” Green’s function. Our goal, now, is to derive equations for the evolution of this Green’s function and strategies to solve them.

2. Brief review of the theory of the non-equilibrium Green’s functions

The formal theory of non-equilibrium Green’s function has been developed independently by Kadanoff and Baym [Kadanoff and Baym 1959], Schwinger [Schwinger 1961] and Keldysh [Keldysh 1962]. The structure of that theory is very similar to the one of causal Green’s functions at zero temperature (see Mahan 1990), except for the fact that in non-equilibrium situations, the assumption that the state of the system at time $+\infty$ differs just in a phase from the state in $-\infty$ does not longer holds. The way to overcome this inconvenience is to define the evolution along a special contour \mathcal{C} that defines a round trip, first going from $-\infty$ to $+\infty$ and then going back to $-\infty$. As in equilibrium problems, the precise description of that evolution can be accomplished with the help of Wick’s theorem and Feynman diagrams and one of the big powers of this technique is the possibility of treating many-body interactions in a systematic way.

We skip here the technical just highlighting the main ideas leading to some useful identities, and we defer the reader to more specialized literature (see Mahan 1990, Haug and Jauho 1996, Caroli et al. 1971, Pastawski 1992, Jauho et al. 1994). Instead of the time-ordering operator used in the equilibrium theory, it is convenient to work with contour-ordered Green’s functions:

$$G(1, 1') = -i \langle T_{\mathcal{C}}[c(1)c^\dagger(1')] \rangle, \quad (23)$$

where $1, 1'$ is a schematic notation that labels the electronic degrees of freedom and time in the same index and the operator $T_{\mathcal{C}}$ denotes time-ordering along a contour that begins in $-\infty$ evolves to $+\infty$ (\mathcal{C}_+) and then turns back from $+\infty$ to $-\infty$ (\mathcal{C}_-). This function corresponds to the casual “time-ordered”, the “lesser”, the “anti-time-ordered” or “greater” function depending on the position of the two times along the closed time-contour:

$$\begin{aligned} G(1, 1') &= G_c(1, 1'), \quad t_1, t_{1'} \in \mathcal{C}_+, & G(1, 1') &= G^<(1, 1'), \quad t_1 \in \mathcal{C}_+, t_{1'} \in \mathcal{C}_-, \\ G(1, 1') &= G_{\bar{c}}(1, 1'), \quad t_1, t_{1'} \in \mathcal{C}_-, & G(1, 1') &= G^>(1, 1'), \quad t_1 \in \mathcal{C}_-, t_{1'} \in \mathcal{C}_+, \end{aligned} \quad (24)$$

with:

$$\begin{aligned}
G_c(1, 1') &= -i \Theta(t_1 - t_{1'}) \langle c_1(t_1) c_1^\dagger(t_{1'}) \rangle + i \Theta(t_{1'} - t_1) \langle c_1^\dagger(t_{1'}) c_1(t_1) \rangle, \\
G_{\bar{c}}(1, 1') &= -i \Theta(t_{1'} - t_1) \langle c_1(t_1) c_1^\dagger(t_{1'}) \rangle + i \Theta(t_1 - t_{1'}) \langle c_1^\dagger(t_{1'}) c_1(t_1) \rangle, \\
G^<(1, 1') &= i \langle c_1^\dagger(t_{1'}) c_1(t_1) \rangle, \quad G^>(1, 1') = -i \langle c_1(t_1) c_1^\dagger(t_{1'}) \rangle,
\end{aligned} \tag{25}$$

which are not independent functions, but satisfy: $G_c + G_{\bar{c}} = G^< + G^>$. It is also convenient to define “retarded” and “advanced” functions:

$$\begin{aligned}
G^R(1, 1') &= \Theta(t_1 - t_{1'}) [G^>(1, 1') - G^<(1, 1')], \\
G^A(1, 1') &= \Theta(t_{1'} - t_1) [G^<(1, 1') - G^>(1, 1')],
\end{aligned} \tag{26}$$

which are also related through $G^R - G^A = G^> - G^<$, $G^A(1, 1') = [G^R(1', 1)]^*$ and $G^<(1, 1') = -[G^>(1', 1)]^*$.

In our simple model of non-interacting electrons, we can split by convenience the Hamiltonian in two parts $H(t) = H_0(t) + H'(t)$, with both terms being of one-body type but H_0 being easily solved. The evolution of this Green’s function is given by Dyson’s equation, which for a one-body Hamiltonian reads:

$$G(1, 1') = G_0(1, 1') + \hbar^{-1} \int_{\mathcal{C}} d^3x_2 dt_2 G(1, 2) H'(2) G_0(2, 1'). \tag{27}$$

Notice that the above equation actually represents a matricial integral equation if we distinguish the positions of the times as in (25). A convenient tool to derive explicit equations for the different components (25) is a theorem due to Langreth, which states given a product of contour-ordered Green’s functions of the form:

$$G(t_1, t_{1'}) = \int_{\mathcal{C}} dt_2 G_1(t_1, t_2) G_2(t_2, t_{1'}), \tag{28}$$

then, the following relations hold for the different components:

$$\begin{aligned}
G^{R,A}(t_1, t_{1'}) &= \int_{t_{1'}}^{t_1} dt_2 G_1^{R,A}(t_1, t_2) G_2^{R,A}(t_2, t_{1'}), \\
G^{<,>}(t_1, t_{1'}) &= \int_{-\infty}^{-\infty} dt_2 [G_1^R(t_1, t_2) G_2^{<,>}(t_2, t_{1'}) + G_1^{<,>}(t_1, t_2) G_2^A(t_2, t_{1'})].
\end{aligned} \tag{29}$$

Therefore, if we want to compute $G^<$, in order to evaluate expectation values of observables, we must also solve two coupled equations for that function and G^R .

3. Green's functions and Dyson's equations in our problem

Let us first split our Hamiltonian as follows: $H_0(t) = H_L + H_R + H_C(t)$ and $H' = H_c$. The Dyson's equation for the retarded function reads:

$$G_{j,j'}(t, t') = g_{j,j'}^0(t, t') + \hbar^{-1} \sum_{j_1} \int_C dt_1 G_{j,j_1}(t, t_1) H_c g_{j_1,j'}^0(t_1, t'), \quad (30)$$

where $g_{j,j'}^0(t, t')$ is the contour-ordered Green's function of $H_0(t)$ and j, j' run over all the electronic degrees of freedom of this Hamiltonian. If we write the above equation explicitly for one of indexes in the reservoir and $l \in C$:

$$G_{l,k\alpha}(t, t') = -w_c \int_C dt_1 G_{l,l\alpha}(t, t_1) g_{k\alpha,k\alpha}^0(t_1, t'), \quad (31)$$

For the two indexes $l, l' \in C$:

$$\begin{aligned} G_{l,l'}(t, t') &= g_{l,l'}^0(t, t') - w_c \sum_{\alpha=L,R} \int_C dt_1 G_{l,k\alpha}(t, t_1) g_{l\alpha,l'}^0(t_1, t'), \\ &= g_{l,l'}^0(t, t') + \hbar^{-1} \sum_{\alpha=L,R} \int_{-\infty}^{\infty} dt_1 dt_2 G_{l,l\alpha}(t, t_1) \Sigma_{\alpha}(t_1, t_2) g_{l\alpha,l'}^0(t_2, t'), \end{aligned} \quad (32)$$

where going from the first to the second identity we have substituted (31). We have also defined the ‘‘self-energy’’:

$$\Sigma_{\alpha}(t_1, t_2) = |w_{c\alpha}|^2 \sum_{k\alpha} g_{k\alpha,k\alpha}^0(t_1, t_2). \quad (33)$$

In order to evaluate the currents that we have defined in section (II C), we need $G_{l,l'}^<(t, t')$ for $l, l' \in C$ and $G_{k\alpha,l\alpha}^{<,>}(t, t')$. Applying the Langreth's rules (29) to the above equations we get (see Arrachea 2002 and 2005):

$$G_{l,k\alpha}^{<,>}(t, t') = -w_{c\alpha} \int_{-\infty}^{+\infty} dt_1 [G_{l,l\alpha}^R(t, t_1) g_{k\alpha,k\alpha}^{0,<,>}(t_1, t') + G_{ll\alpha}^{<,>}(t, t_1) g_{k\alpha,k\alpha}^{0,A}(t_1, t')], \quad (34)$$

along the contact and

$$G_{l,l'}^{<,>}(t, t') = \hbar^{-1} \sum_{\alpha} \int_{-\infty}^{+\infty} dt_1 dt_2 G_{l,l\alpha}^R(t, t_1) \Sigma_{\alpha}^{<,>}(t_1, t_2) G_{l\alpha,l'}^A(t_2, t'), \quad (35)$$

for coordinates l, l' belonging to the central system C . The latter equation is obtained after some algebra and after dropping a term that contains $g_{l,l'}^{0,<}(t, t')$ which can shown to

relevant only in the description of transient behavior (see Jauho et al. 1994). The different components of $G^0(t, t')$ within the reservoirs are straightforwardly evaluated:

$$\begin{aligned} g_{k\alpha, k\alpha}^{0,R}(t_1, t_2) &= -i \Theta(t_1 - t_2) \exp\{-i(\varepsilon_{k\alpha}/\hbar)(t_1 - t_2)\}, \\ g_{k\alpha, k\alpha}^{0,<,>}(t_1, t_2) &= \lambda_{\alpha}^{<,>}(\varepsilon_{k\alpha}) \exp\{-i(\varepsilon_{k\alpha}/\hbar)(t_1 - t_2)\}, \end{aligned} \quad (36)$$

with $\lambda_{\alpha}^{<}(\varepsilon_{k\alpha}) = i f_{\alpha}(\varepsilon_{k\alpha})$ and $\lambda_{\alpha}^{>}(\varepsilon_{k\alpha}) = -i [1 - f_{\alpha}(\varepsilon_{k\alpha})]$. With these functions, it is possible to obtain expressions for the different components of (33) in terms of the density of states of the reservoir $\rho_{\alpha}(\omega)$ given in (3):

$$\begin{aligned} \Sigma_{\alpha}^R(t_1, t_2) &= -i \Theta(t_1 - t_2) \int_{-\infty}^{+\infty} \frac{d\omega}{2\pi} e^{-i\omega(t_1 - t_2)} \Gamma_{\alpha}(\omega), \\ \Sigma_{\alpha}^{<,>}(t_1, t_2) &= \int_{-\infty}^{+\infty} \frac{d\omega}{2\pi} e^{-i\omega(t_1 - t_2)} \lambda_{\alpha}^{<,>}(\hbar\omega) \Gamma_{\alpha}(\omega), \end{aligned} \quad (37)$$

with $\Gamma_{\alpha}(\omega) = |w_{c\alpha}|^2 \rho_{\alpha}(\omega)$.

To evaluate (34) and (35) we still have to calculate the retarded function within the system C (recall that the advanced function can be obtained from $G_{i,l}^A(t, t') = [G_{l,i}^R(t', t)]^*$). The equation for the retarded function is the retarded component of (32) and can be derived by applying Langreth rules on this equation. The result is:

$$G_{i,l'}^R(t, t') = g_{i,l'}^{0,R}(t, t') + \hbar^{-1} \sum_{\alpha} \int_{t'}^t dt_1 dt_2 G_{i,l'\alpha}^R(t, t_1) \Sigma_{\alpha}^R(t_1, t_2) g_{l'\alpha}^{0,R}(t_2, t'), \quad (38)$$

with $g_{i,l'}^{0,R}(t, t')$ being the retarded Green's function of the system described only by $H_C(t)$ isolated from the reservoirs. This function is, in turn still an unknown in our problem. Instead of explicitly evaluating it, we find it more convenient to operate with (38) in order to find an equivalent equation for $\hat{G}^R(t, t')$ as follows. We first derive an equation of motion for $g_{i,l'}^{0,R}(t, t')$, starting from the very definition of the retarded function, see Eq. (26), and by writing the evolution of $c_j(t)$ with $H_C(t)$ in the Heisenberg representation:

$$i\hbar \dot{c}_j(t) = [H_C(t), c_j(t)], \quad (39)$$

we get:

$$-i\hbar \frac{\partial}{\partial t'} \hat{g}^{0,R}(t, t') - \hat{g}^{0,R}(t, t') \hat{H}_C(t') = \hbar \hat{1} \delta(t - t'), \quad (40)$$

where $\hat{g}^{0,R}(t, t')$ is a $N \times N$ matrix with elements $g_{i,l'}^{0,R}(t, t')$ and $\hat{1}$ is the $N \times N$ identity matrix. The above equation means that $\{-i\hbar \partial / \partial t' - \hat{H}_C(t')\} = [\hat{g}^{0,R}]^{-1}$. Therefore, we have

not evaluated explicitly the function $\hat{g}^{0,R}(t, t')$ but we have identified an operator which is its inverse. We act with this operator from the right of (38) and we consider the following splitting of the central Hamiltonian $H_C(t) = H_C^0 + H'_C(t)$, where $H_C(t)$ collects all the explicit time-dependent terms of $H_C(t)$ and H_C^0 , the remaining ones. We get:

$$-i\hbar\frac{\partial}{\partial t'}\hat{G}^R(t, t') - \hat{G}^R(t, t')\hat{H}_C^0 - \int dt_1\hat{G}^R(t, t_1)\hat{\Sigma}^R(t_1, t') - \hat{G}^R(t, t')H'_C(t') = \hbar\hat{1}\delta(t-t'), \quad (41)$$

being $\Sigma_{l,l'}^R(t, t') = \sum_{\alpha} \delta_{l,l\alpha}\delta_{l',l\alpha}\Sigma_{\alpha}^R(t, t')$, the matrix elements of $\hat{\Sigma}(t, t')$. We define a function $\hat{G}^{0,R}(t, t')$, such that $[\hat{G}^{0,R}]^{-1} = \{-i\hbar\partial/\partial t' - \hat{H}_C^0 - \hat{\Sigma}^R\}$:

$$-i\hbar\frac{\partial}{\partial t'}\hat{G}^{0,R}(t, t') - \hat{G}^{0,R}(t, t')\hat{H}_C^0 - \int dt_1\hat{G}^{0,R}(t, t_1)\hat{\Sigma}^R(t_1, t') = \hbar\hat{1}\delta(t-t'). \quad (42)$$

Multiplying (38) by the right with $\hat{G}^{0,R}$, we finally find the following equation for the full retarded Green's function

$$\hat{G}^R(t, t') = \hat{G}^{0,R}(t, t') + \hbar^{-1} \int_{t'}^t dt_1\hat{G}^R(t, t_1)H'_C(t_1)\hat{G}^{0,R}(t_1, t'). \quad (43)$$

This equation is completely equivalent to (38) but has the advantage that the function $\hat{G}^{0,R}$ is an equilibrium Green's function, which evolves according to the stationary terms of the full Hamiltonian H . The above expression has a structure which is particularly adequate for perturbative solutions in the time dependent part of $H_C(t)$. We shall exploit this property later.

Equation (42) can be easily solved by performing the Fourier transform: $\hat{G}^{0,R}(\omega) = \hbar^{-1} \int_0^{\tau} d\tau e^{-i(\omega+i\eta)\tau}\hat{G}^{0,R}(\tau)$, with $\eta > 0$, since, as we have mentioned before, it corresponds to an equilibrium Green's function that depends on $t - t'$. The result is :

$$\hat{G}^{0,R}(\omega) = [\hbar(\omega + i\eta)\hat{1} - \hat{H}_C^0 - \hat{\Sigma}^R(\omega)]^{-1}, \quad (44)$$

and can be explicitly evaluated by simply inverting the above $N \times N$ complex matrix. Substituting in (43) and performing a Fourier transform in $t - t'$, Eq. (43) results for our specific Hamiltonian (6):

$$\hat{G}^R(t, \omega) = \hat{G}^{0,R}(\omega) + \sum_{k=\pm} e^{-ik\Omega_0 t} \hat{G}^R(t, \omega + k\Omega_0) \hat{V}(k) \hat{G}^{0,R}(\omega), \quad (45)$$

where the matrix $\hat{V}(1)$ contains elements $V_{l,l'} = \delta_{l,l'} \sum_{j=1}^M \delta(x_l - x_j) e V_0 e^{-i\delta_j}$ and $\hat{V}(-1) = [\hat{V}(1)]^*$. The linear set (45) has the same structure as the dynamics of a problem in which

electrons with a given energy $\hbar\omega$ interact with a potential V emitting or absorbing an energy quantum $\hbar\Omega_0$ and scatter with a final energy $\hbar\omega \pm \hbar\Omega_0$. The solution of (45) leads to the complete solution of the problem.

Due to the harmonic dependence on the time t of these equations, the retarded Green's function can be expanded in a Fourier series as follows:

$$\hat{G}^R(t, \omega) = \sum_{n=-\infty}^{+\infty} \hat{\mathcal{G}}(n, \omega) e^{-in\Omega_0 t}. \quad (46)$$

We give the name of *Floquet component* to the functions $\hat{\mathcal{G}}(n, \omega)$, because (46) has a similar structure as that proposed by Floquet for the wave functions of time-periodic Hamiltonians. The different components obey the following useful identity:

$$\hat{\mathcal{G}}(n, \omega) - \hat{\mathcal{G}}^\dagger(-n, \omega_n) = -i \sum_{n'} \hat{\mathcal{G}}(n + n', \omega_{-n'}) \hat{\Gamma}(\omega_{-n'}) \hat{\mathcal{G}}(n', \omega_{-n'})^\dagger, \quad (47)$$

where we have introduced the following notation $\omega_n = \omega + n\Omega_0$. To prove (47) we start from the definition (26) of the retarded Green's function for indexes $l, l' \in C$. Replacing (35) and inserting there the representation (46), we get:

$$\hat{G}^R(t, t') = -i\hbar\Theta(t - t') \sum_{k_1, k_2} \int_{-\infty}^{+\infty} \frac{d\omega}{2\pi} e^{-i[\omega(t-t') + \Omega_0(k_1 t - k_2 t')]} \hat{\mathcal{G}}(k_1, \omega) \hat{\Gamma}(\omega) \hat{\mathcal{G}}^\dagger(k_2, \omega), \quad (48)$$

where $\hat{\Gamma}(\omega)$ contains as matrix element $\Gamma_{l,l'}(\omega) = \delta_{l,l\alpha} \delta_{l',l\alpha} \Gamma_\alpha(\omega)$. Calculating the Fourier transform of this function with respect to $t - t'$ and collecting the n -th Fourier coefficient (46) we find:

$$\hat{\mathcal{G}}(n, \omega) = \sum_{n'} \int_{-\infty}^{+\infty} \frac{d\omega'}{2\pi} \frac{\hat{\mathcal{G}}(n + n', \omega') \hat{\Gamma}(\omega') \hat{\mathcal{G}}(n', \omega')^\dagger}{\omega - \omega'_{n'} + i\eta}, \quad \eta > 0, \quad (49)$$

which leads to the identity (47) using:

$$\frac{1}{\omega - \omega' + i\eta} = \mathcal{P} \left\{ \frac{1}{\omega - \omega'} \right\} - i\pi\delta(\omega - \omega'). \quad (50)$$

It is important to remark that, for $V_0 = 0$ the identity (47) reduces to the following identity between equilibrium Green's functions:

$$\hat{\rho}(\omega) \equiv \hat{G}^{0,R}(\omega) - \hat{G}^{0,R^\dagger}(\omega) = -i\hat{G}^{0,R}(\omega) \hat{\Gamma}(\omega) \hat{G}^{0,R}(\omega)^\dagger. \quad (51)$$

4. Perturbative solution of the Dyson's equation

Sometimes, in order to derive analytical expressions, it is convenient to solve the set (45) by recourse to a perturbative expansion in \hat{V} (see Arrachea 2005). The solution up to second order in this parameter is obtained by writing (45) evaluated at ω_n , for $n = -2, \dots, 2$ and back-substituting the equation evaluated at ω_2 into the one evaluated at ω_1 , and the latter into the one evaluated at ω , and a similar procedure with $\omega_{-2} \rightarrow \omega_{-1}$ and the latter into ω . If we then collect all the coefficients of $e^{-in\Omega_0 t}$ in the resulting expression and recalling the representation (46), we obtain

$$\hat{G}^R(t, \omega) \sim \sum_{n=-2}^{+2} \mathcal{G}(n, \omega) e^{-in\Omega_0 t}, \quad (52)$$

with:

$$\begin{aligned} \hat{\mathcal{G}}(0, \omega) &= \hat{G}^{0,R}(\omega) + \sum_{k=\pm 1} \hat{\mathcal{G}}(k, \omega) \hat{V}(-k), \\ \hat{\mathcal{G}}(\pm 1, \omega) &= \hat{G}^{0,R}(\omega_{\pm 1}) \hat{V}(\pm 1) \hat{G}^{0,R}(\omega), \\ \hat{\mathcal{G}}(\pm 2, \omega) &= \hat{G}^{0,R}(\omega_{\pm 2}) \hat{V}(\pm 1) \hat{\mathcal{G}}(\pm 1, \omega). \end{aligned} \quad (53)$$

The reader can easily extend the procedure to evaluate higher order terms.

B. Scattering matrix formalism

To calculate the charge and energy flows generated by the driven central system in the wires one can also use the scattering approach. Within this approach we consider the central system as some scatterer which reflects or transmits electrons incoming from the wires. The electrons coming, for instance, from the left wire can be transmitted to the right wire or can be reflected back to the left wire. To find the current in some wire we need just to calculate the difference between the number of particles incoming through this wire and the number of particles exiting the central system through the same wire. We do not need to know what happened with an electron inside the central system. We only need to know the quantum-mechanical scattering amplitudes for an electron to be transmitted/reflected through/from the central system. The advantage of the scattering approach is the simplicity and the physical transparency of expressions written in terms of scattering amplitudes. We

stress that the scattering approach does not aim to calculate the single particle scattering amplitudes. This approach tells us how to calculate the transport properties of a mesoscopic structure coupled to wires if the scattering amplitudes are known. To calculate the scattering amplitudes one can use the Green's functions method. We will give an explicit expression for the scattering amplitudes in terms of corresponding Green's functions. Actually the combining Green's functions – scattering approach is one of the most powerful and practical approaches for transport phenomena in mesoscopic structures.

1. General formalism

The scattering approach to transport phenomena in small phase-coherent samples connected to macroscopic reservoirs was introduced and developed by Landauer and Büttiker (Landauer 1957, 1970, 1975, Büttiker 1990, 1992, 1993).

Within this formalism we consider electrons only in the one-dimensional wires connecting the central system to macroscopic reservoirs. It is convenient to introduce separate operators $a_\alpha(\varepsilon)$ for incoming and $b_\alpha(\varepsilon)$ for scattered electrons with energy ε .

Then the current $J_\alpha(t)$ flowing into wire α to the central system is the following (Büttiker 1992):

$$J_\alpha(t) = \frac{e}{h} \int_{-\infty}^{\infty} d\varepsilon d\varepsilon' e^{i\frac{\varepsilon-\varepsilon'}{h}t} \{ \langle a_\alpha^\dagger(\varepsilon) a_\alpha(\varepsilon') \rangle - \langle b_\alpha^\dagger(\varepsilon) b_\alpha(\varepsilon') \rangle \}. \quad (54)$$

Here $\langle \dots \rangle$ denotes averaging over equilibrium states of reservoirs.

Correspondingly the dc current reads:

$$\bar{J}_\alpha = \frac{e}{h} \int_{-\infty}^{\infty} d\varepsilon \{ f_\alpha(\varepsilon) - f_\alpha^{(out)}(\varepsilon) \}, \quad (55)$$

where $f_\alpha^{(out)}(\varepsilon) = \langle b_\alpha^\dagger(\varepsilon) b_\alpha(\varepsilon) \rangle$ is the distribution function for electrons exiting the central system through the wire α , and $f_\alpha(\varepsilon) = \langle a_\alpha^\dagger(\varepsilon) a_\alpha(\varepsilon) \rangle$ is the distribution function for electrons incoming through the wire α . This expression tells us that the dc current is the difference per unit time between the number of electrons entering and exiting the system. As the reservoir is at equilibrium, the distribution function for the incoming electrons is the Fermi distribution function. In contrast, the scattered electrons, in general, are non equilibrium particles. To calculate the distribution function for the scattered electrons we express the b -operators in terms of a -operators. Since an electron coming from any wire can be scattered into a given wire α , then the operators b_α depend on all the operators for the incoming particles. In the

model we consider in this chapter, the number of reservoirs is two, $\beta = L, R$. Therefore, $b_\alpha(\varepsilon) = \sum_{\beta=L,R} S_{\alpha\beta}(\varepsilon)a_\beta(\varepsilon)$, being $S_{\alpha\beta}$ the scattering amplitudes. These amplitudes are normalized in such a way that their square define corresponding currents (Büttiker 1992). The quantities $S_{\alpha\beta}(\varepsilon)$ can be viewed as the elements of some matrix, which is called the scattering matrix $\hat{S}(\varepsilon)$.

2. Floquet scattering matrix

If the scatterer is driven by external forces which are periodic in time with period $\tau = 2\pi/\Omega_0$, then interacting with such a scatterer an electron can gain or loss some energy quanta $n\hbar\Omega_0$, $n = 0, \pm 1, \dots$. Therefore, in this case the scattering amplitudes in addition to the two wire indexes become dependent on the two energies, one for the incoming and the other for the outgoing electrons. Such a scattering matrix is called the Floquet scattering matrix \hat{S}_F (see, e.g., Platero and Aguado 2004). Their elements, $S_{F,\alpha\beta}(\varepsilon_n, \varepsilon)$, are related to photon-assisted amplitudes for an electron with energy ε entering the scatterer through the lead β and leaving the scatterer with energy $\varepsilon_n = \varepsilon + n\hbar\Omega_0$ through the lead α . Now the relation between the operators b for outgoing particles and a for incoming particles reads (Moskalets and Büttiker 2002a):

$$b_\alpha(\varepsilon) = \sum_{\beta=L,R} \sum_n S_{F,\alpha\beta}(\varepsilon, \varepsilon_n) a_\beta(\varepsilon_n), \quad (56)$$

where the sum over n runs over those n for which $\varepsilon_n > \varepsilon_{0\beta}$, hence it corresponds to propagating (i.e. current-carrying) states. We denote the Floquet scattering matrix the submatrix corresponding to transitions between the propagating states only. In the case where $\hbar\Omega_0 \ll \varepsilon$, the sum in Eq. (56) runs over all the integers: $-\infty < n < \infty$. In what follows we assume this to be the case. Note that if the scatterer is stationary, the only term that remains non-vanishing is that with $n = 0$, and the Floquet scattering matrix is reduced to the stationary scattering matrix with elements $S_{\alpha\beta}(\varepsilon) = S_{F,\alpha\beta}(\varepsilon, \varepsilon)$.

The conservation of the particle current at each scattering event implies that the Floquet scattering matrix is a unitary matrix (Moskalets and Büttiker 2002a, 2004):

$$\sum_{\alpha=L,R} \sum_{n=-\infty}^{\infty} S_{F,\alpha\beta}^*(\varepsilon_n, \varepsilon) S_{F,\alpha\gamma}(\varepsilon_n, \varepsilon_m) = \delta_{m0} \delta_{\beta\gamma}, \quad (57)$$

$$\sum_{\beta=L,R} \sum_{n=-\infty}^{\infty} S_{F,\alpha\beta}^*(\varepsilon, \varepsilon_n) S_{F,\gamma\beta}(\varepsilon_m, \varepsilon_n) = \delta_{m0} \delta_{\alpha\gamma}. \quad (58)$$

Using Eq. (56) we calculate the distribution function for electrons scattered into wire α :

$$f_{\alpha}^{(out)}(\varepsilon) = \sum_{\beta=L,R} \sum_{n=-\infty}^{\infty} |S_{F,\alpha\beta}(\varepsilon, \varepsilon_n)|^2 f_{\beta}(\varepsilon_n). \quad (59)$$

This function is not the Fermi distribution function unless the scatterer is stationary and all the reservoirs have the same chemical potentials and temperatures. This reflects the fact that the particles scattered by the dynamical scatterer (quantum pump) are out of equilibrium.

3. Adiabatic scattering

If the driving forces change slowly, $\Omega_0 \rightarrow 0$, they behave as if they were almost constant for the electrons propagating through the central system. For this reason, the scattering properties of a slowly driven (adiabatic) scatterer are close to those of a stationary one. Nevertheless there is an essential difference: in spite of the slowly change of the fields, an electron can still absorb or emit one or several energy quanta $\hbar\Omega_0$ in its travel through the central system. Therefore, although the adiabatic scatterer is characterized by the Floquet scattering matrix dependent on two energies, $\hat{S}_F(\varepsilon_n, \varepsilon)$, it is natural to expect that it could be related to the stationary scattering matrix $\hat{S}(\varepsilon)$ under these conditions

The stationary scattering matrix \hat{S} depends on the electron energy ε and some properties of the scatterer. To account the latter dependence we introduce the set of parameters, $\{p_i\}$, $i = 1, \dots, M_p$ and write $\hat{S}(\{p_i\}, \varepsilon)$. Under the action of external periodic forces the parameters periodically change in time, $p_i(t) = p_i(t + \tau)$. Therefore, the matrix \hat{S} becomes dependent on time, $\hat{S}(t, \varepsilon) \equiv \hat{S}(\{p_i(t)\}, \varepsilon)$ and periodic, $\hat{S}(t, \varepsilon) = \hat{S}(t + \tau, \varepsilon)$. The obtained matrix is called the frozen scattering matrix. This name means that the matrix $\hat{S}(t_0, \varepsilon)$ describes the scattering properties of a stationary scatterer whose parameters coincide with the parameters of a given scatterer frozen at time $t = t_0$. The Fourier coefficient for the frozen matrix,

$$\hat{S}_n(\varepsilon) = \int_0^{\tau} \frac{dt}{\tau} e^{in\Omega_0 t} \hat{S}(t, \varepsilon), \quad (60)$$

can be related to the Floquet scattering matrix.

At low driving frequencies, $\Omega_0 \rightarrow 0$, one can expand the elements of the Floquet scattering matrix in powers of Ω_0 . Up to the first order in Ω_0 we have (Moskalets and Büttiker 2004):

$$\hat{S}_F(\varepsilon_n, \varepsilon) = \hat{S}_n(\varepsilon) + \frac{n\hbar\Omega_0}{2} \frac{\partial \hat{S}_n(\varepsilon)}{\partial \varepsilon} + \hbar\Omega_0 \hat{A}_n(\varepsilon) + \mathcal{O}(\Omega_0^2). \quad (61)$$

Here \hat{A}_n is the Fourier transform for a matrix $\hat{A}(t, \varepsilon)$, which formally encloses corrections that can not be related to the frozen scattering matrix and has to be calculated independently, see (Moskalets and Büttiker 2005) for some examples. Note that in the above equation the frozen scattering matrix and the matrix \hat{A} should be kept as energy-independent within a scale of order $\hbar\Omega_0$.

The unitarity of the Floquet scattering matrix puts some constraint on the matrix \hat{A} . Substituting Eq. (61) into Eq. (57) and taking into account that the stationary (frozen) scattering matrix is unitary we get the following relation:

$$\hbar\Omega_0 \left\{ \hat{S}^\dagger \hat{A} + \hat{A}^\dagger \hat{S} \right\} = \frac{i\hbar}{2} \left(\frac{\partial \hat{S}^\dagger}{\partial t} \frac{\partial \hat{S}}{\partial \varepsilon} - \frac{\partial \hat{S}^\dagger}{\partial \varepsilon} \frac{\partial \hat{S}}{\partial t} \right). \quad (62)$$

The advantage of the adiabatic ansatz, Eq. (61), is that the matrices \hat{S} and \hat{A} depend only on one energy and thus have a much smaller number of elements than the Floquet scattering matrix. In addition, the adiabatic ansatz allows us to draw some conclusions concerning the physical properties of slowly driven systems, in particular, concerning the generated heat flows.

C. Floquet scattering matrix versus Green's function

There exists a simple relation between the Floquet scattering matrix elements and the Fourier coefficients for the Green's function (Arrachea and Moskalets 2006):

$$S_{F,\alpha\beta}(\hbar\omega_m, \hbar\omega_n) = \delta_{\alpha,\beta} \delta_{m,n} - i\sqrt{\Gamma_\alpha(\omega_m)\Gamma_\beta(\omega_n)} \mathcal{G}_{l\alpha,l\beta}(m-n, \omega_n), \quad (63)$$

where the Floquet component of the Fourier transformed Green's function $\mathcal{G}(n, \omega)$ was introduced in Eq. (46). The equation (63) is a generalization to periodically driven systems of a formula proposed by Fisher and Lee (Fisher and Lee 1981) for stationary systems. This relation is based in the fact that the unitary property (57) and (58) which is fundamental to prove the conservation of the charge within the scattering matrix formalism can be proved from identities between the Green's functions, see Eq. (47) through the relation (63). We do

not present in this chapter further details on those proofs. Instead, in the next subsection we explicitly show that both formalisms lead to expressions for the currents through the contacts that are equivalent provided that the above relation holds.

D. Final expressions for the dc currents and powers

1. Particle currents and the conservation of the charge

We begin with the expression for the dc particle currents within the Green's function formalism. In the subsection (III A 1) we have expressed instantaneous values of observables in terms of lesser Green's functions. Now, we use those expressions to evaluate the dc components of the currents defined in subsection (II C). In particular, for the charge currents (10) and (11) we have:

$$\begin{aligned}\bar{J}_l &= \frac{2ew}{\hbar\tau} \int_0^\tau dt \text{Re}[G_{l+1,l}^<(t, t)], \\ \bar{J}_\alpha &= \frac{2ew_{c\alpha}}{\hbar\tau} \int_0^\tau dt \text{Re}[G_{l\alpha,k\alpha}^<(t, t)].\end{aligned}\quad (64)$$

Using the representation (46) in (34) and (35) and substituting in the above expressions casts for the charge currents within C :

$$\bar{J}_l = -\frac{2ew}{h} \sum_{\alpha=L,R} \sum_{n=-\infty}^{\infty} \int_{-\infty}^{+\infty} d\omega f_\alpha(\hbar\omega) \Gamma_\alpha(\omega) \text{Im}[\mathcal{G}_{l+1,l\alpha}(n, \omega) \mathcal{G}_{l,l\alpha}^*(n, \omega)], \quad (65)$$

and through the contacts

$$\begin{aligned}\bar{J}_\alpha &= -\frac{2e|w_{c\alpha}|^2}{h} \int_{-\infty}^{+\infty} d\omega \text{Re} \left\{ i f_\alpha(\hbar\omega) \mathcal{G}_{l\alpha,l\alpha}(0, \omega) \rho_\alpha(\omega) \right. \\ &\quad \left. + \sum_{\beta=L,R} \sum_{n=-\infty}^{+\infty} \sum_{k\alpha} f_\beta(\hbar\omega) |\mathcal{G}_{l\alpha,l\beta}(n, \omega)|^2 \Gamma_\beta(\omega) g_{k\alpha,k\alpha}^{0,A}(\omega_n) \right\} \\ &= \frac{e}{h} \int_{-\infty}^{+\infty} d\omega \left\{ f_\alpha(\hbar\omega) \Gamma_\alpha(\omega) 2 \text{Im}[\mathcal{G}_{l\alpha,l\alpha}(0, \omega)] \right. \\ &\quad \left. - \sum_{\beta=L,R} \sum_{n=-\infty}^{+\infty} f_\beta(\hbar\omega) \Gamma_\alpha(\omega_n) |\mathcal{G}_{l\alpha,l\beta}(n, \omega)|^2 \Gamma_\beta(\omega) \right\}.\end{aligned}\quad (66)$$

In the above equations we have used the definitions of the density of states (3) and the functions (37). Going from the first to the second identity, we have also used the property $\text{Im}[g_{k\alpha,k\alpha}^{0,R}(\omega)] = -\text{Im}[g_{k\alpha,k\alpha}^{0,A}(\omega)] = -\rho_\alpha(\omega)/2$, which can be easily derived just evaluating the

Fourier transforms in (36). From the identity (47), this current can also be expressed in the more compact and symmetric form:

$$\bar{J}_\alpha = \frac{e}{\hbar} \sum_{\beta=L,R} \sum_{n=-\infty}^{+\infty} \int_{-\infty}^{+\infty} d\omega [f_\alpha(\hbar\omega_n) - f_\beta(\hbar\omega)] \Gamma_\alpha(\omega_n) |\mathcal{G}_{l\alpha,l\beta}(n, \omega)|^2 \Gamma_\beta(\omega). \quad (67)$$

Within the Floquet scattering matrix approach, we proceed as follows. Substituting Eq. (59) into Eq. (55) we get the current in terms of the Floquet scattering matrix elements:

$$\bar{J}_\alpha = \frac{e}{\hbar} \int_{-\infty}^{+\infty} d\varepsilon \left\{ f_\alpha(\varepsilon) - \sum_{\beta=L,R} \sum_{n=-\infty}^{\infty} f_\beta(\varepsilon_n) |S_{F,\alpha\beta}(\varepsilon, \varepsilon_n)|^2 \right\}. \quad (68)$$

An equivalent expression is obtained if we make a shift $\varepsilon_n \rightarrow \varepsilon$ (under the integration over energy) and an inversion $n \rightarrow -n$ (under the corresponding sum) in the term containing $f_\beta(\varepsilon_n)$. The results is:

$$\bar{J}_\alpha = \frac{e}{\hbar} \int_{-\infty}^{+\infty} d\varepsilon \left\{ f_\alpha(\varepsilon) - \sum_{\beta=L,R} \sum_{n=-\infty}^{\infty} f_\beta(\varepsilon) |S_{F,\alpha\beta}(\varepsilon_n, \varepsilon)|^2 \right\}. \quad (69)$$

Finally, we can write this equation in an alternative way as follows. We multiply the term $f_\alpha(\varepsilon)$ in Eq. (69) by the left hand side of the identity, $\sum_\beta \sum_n |S_{\alpha\beta}(\varepsilon, \varepsilon_n)|^2 = 1$, following from the unitarity condition Eq. (58), change $\varepsilon_n \rightarrow \varepsilon$ and $n \rightarrow -n$ in the resulting expression, and find:

$$\bar{J}_\alpha = \frac{e}{\hbar} \sum_{\beta=L,R} \sum_{n=-\infty}^{\infty} \int_{-\infty}^{+\infty} d\varepsilon [f_\alpha(\varepsilon_n) - f_\beta(\varepsilon)] |S_{F,\alpha\beta}(\varepsilon_n, \varepsilon)|^2. \quad (70)$$

It is important to note that Eq. (68) coincides with (66), while (70) coincides with (67) if we apply the relation (63) between the Floquet scattering matrix and the Green's function.

Another feature worth of being mentioned is the fact that from the expressions (67) and (70) it can be proved the conservation of the charge, which implies:

$$\sum_{\alpha=L,R} \bar{J}_\alpha = 0. \quad (71)$$

We recall that the \bar{J}_α was defined as the current exiting the reservoir, for this reason current conservation implies that it has different signs at the two reservoirs. A final issue that becomes apparent from Eqs. (67) and (70), is the fact that for slow driving, $\Omega_0 \rightarrow 0$, only electrons near the Fermi energy $\varepsilon \approx \mu$ will be excited and hence will contribute to the generated current, in agreement with our intuition.

2. Particle currents within the adiabatic approximation

In the subsection (III B 3) we have introduced an approximation for the low driving limit of the full Floquet scattering matrix that depends on the frozen scattering matrix and a matrix \hat{A} . In this section we present the expression for the current in terms of that approximation.

We have mentioned that the unitary condition imposes a constraint to the matrix \hat{A} . Another more specific constraint follows from the conservation of a charge current expressed directly in terms of \hat{S} and \hat{A} matrices. To derive it we calculate the dc pumped current \bar{J}_α up to Ω_0^2 terms for all reservoirs at the same temperature and chemical potential, i.e. $f_\alpha = f_0, \forall \alpha$. Since in the adiabatic case under consideration $\Omega_0 \rightarrow 0$, then at any finite temperature it is $k_B T \gg \hbar \Omega_0$, and we can expand $f_0(\varepsilon) - f_0(\varepsilon_n) \approx -(\partial f_0 / \partial \varepsilon) n \hbar \Omega_0 - (\partial^2 f_0 / \partial \varepsilon^2) (n \hbar \Omega_0)^2 / 2$. Substituting this expansion and Eq. (61) into Eq. (70) and performing the inverse Fourier transformation we calculate the charge current as a sum of linear (upper index “(1)”) and quadratic (upper index “(2)”) in driving frequency contributions, $\bar{J}_\alpha = \bar{J}_\alpha^{(1)} + \bar{J}_\alpha^{(2)} + \mathcal{O}(\Omega_0^3)$, with

$$\bar{J}_\alpha^{(1)} = -\frac{e}{2\pi} \int_{-\infty}^{\infty} d\varepsilon \left(-\frac{\partial f_0}{\partial \varepsilon} \right) \int_0^\tau \frac{dt}{\tau} \text{Im} \left(\hat{S}(t, \varepsilon) \frac{\partial \hat{S}^\dagger(t, \varepsilon)}{\partial t} \right)_{\alpha\alpha}, \quad (72)$$

$$\bar{J}_\alpha^{(2)} = -\frac{e}{2\pi} \int_{-\infty}^{\infty} d\varepsilon \left(-\frac{\partial f_0}{\partial \varepsilon} \right) \int_0^\tau \frac{dt}{\tau} \text{Im} \left(2\Omega_0 \hat{A}(t, \varepsilon) \frac{\partial \hat{S}^\dagger(t, \varepsilon)}{\partial t} \right)_{\alpha\alpha}. \quad (73)$$

The linear behavior of the current as a function of the frequency was calculated by Brouwer (Brouwer 1998) using the scattering approach to low-frequency ac transport in mesoscopic systems developed by Büttiker et al. (Büttiker et al. 1994). The conservation of this current, $\sum_\alpha \bar{J}_\alpha^{(1)} = 0$, was demonstrated by Avron et al. (Avron et al. 2004) on the base of the Birman-Krein relation, $d \ln(\det \hat{S}) = -\text{Tr}(\hat{S} d \hat{S}^\dagger)$ (where $\det(\hat{X})$ and $\text{Tr}(\hat{X})$ are the determinant and the trace of a matrix \hat{X} , respectively), applied to the frozen matrix which is unitary.

The conservation of the current up to the second order in frequency, $\sum_\alpha \bar{J}_\alpha^{(2)} = 0$, leads to the constraint for the matrix \hat{A} we are looking for:

$$\text{Im} \int_0^\tau \frac{dt}{\tau} \text{Tr} \left(\hat{A} \frac{\partial \hat{S}^\dagger}{\partial t} \right) = 0, \quad (74)$$

Equations (61) and (62) show us that the expansion in powers of Ω_0 actually is an expansion in powers of $\hbar \Omega_0 / \delta \varepsilon$, where $\delta \varepsilon$ is an energy scale characteristic for the stationary

scattering matrix. The energy $\delta\varepsilon$ relates to the inverse time spent by an electron with energy ε inside the scattering region (the dwell time). Therefore, one can say that the adiabatic expansion, Eq. (61) is valid if the period of external forces is large compared with the dwell time. It is important to stress that this definition of “adiabaticity” is different from that usually used in quantum mechanics one which requires the excitation quantum $\hbar\Omega_0$ to be small compared with the level spacing.

3. Particle currents within perturbation theory

In order to gain physical intuition on the behavior of the dc charge current, let us consider the weak driving regime (low V_0) and let us evaluate (67) \bar{J}_α with the perturbative solution of the Green’s function we have presented in (52). We assume that both reservoirs are at temperature $T_\alpha = 0$. Substituting (52) into (67), we get:

$$\bar{J}_\alpha = \frac{e}{h} \sum_{\beta=L,R} \sum_{k=\pm 1} \int_{-\infty}^{\infty} d\omega [f_\alpha(\hbar\omega_k) - f_\beta(\hbar\omega)] \Gamma_\alpha(\omega_k) |\mathcal{G}_{l_\alpha, l_\beta}(k, \omega)|^2 \Gamma_\beta(\omega). \quad (75)$$

In the same spirit as in the adiabatic approximation, let us consider that the driving is slow, i.e. $\Omega_0 \rightarrow 0$, and let us expand the integrand of the above equation up to the first order in Ω_0 . Replacing the Floquet components evaluated up to second order in perturbation theory (53) we get:

$$\bar{J}_\alpha = \frac{2eV_0^2\Omega_0}{h} \sum_{j,j'=1}^M \sum_{\beta=L,R} \Gamma_\alpha(\mu) \Gamma_\beta(\mu) \sin(\delta_j - \delta_{j'}) G_{l_\alpha, l_j}^{0,R}(\mu) G_{l_j, l_\beta}^{0,R}(\mu) \left[G_{l_\alpha, l_{j'}}^{0,R}(\mu) G_{l_{j'}, l_\beta}^{0,R}(\mu) \right]^*, \quad (76)$$

where j, j' runs over the M pumping potentials. Thus, even without specifying the geometrical details on the structure, which are contained in G^0 , Eq. (76) provides us a valuable piece of information. As a first point it tells us that at low driving the leading contribution to the dc particle current is $\propto V_0^2\Omega_0$. A second important point is that with local time-dependent potentials, as we are considering in our model, we need at least two of these potentials operating with a phase lag in order to have a non-vanishing value for this lowest order contribution.

4. Energy and heat currents

We can follow a similar procedure as in the previous subsection to derive the dc energy and heat currents. In terms of Green's functions we start writing the dc energy currents (15) and (16) as follows:

$$\begin{aligned}\bar{J}_l^E &= \frac{2w}{\hbar\tau} \int_0^\tau dt \left\{ \text{Re}[G_{l+2,l}^<(t,t)]w - \text{Re}[G_{l+2,l+1}^<(t,t)]\varepsilon_{l+1}(t) \right\}, \\ \bar{J}_\alpha^E &= \frac{2w_{c\alpha}}{\hbar\tau} \sum_{k\alpha} \int_0^\tau dt \varepsilon_{k\alpha} \text{Re}[G_{l\alpha,k\alpha}^<(t,t)],\end{aligned}\quad (77)$$

The energy current within C is:

$$\begin{aligned}\bar{J}_l^E &= -\frac{2w}{h} \sum_{\alpha=L,R} \sum_{n=-\infty}^{\infty} \int_{-\infty}^{+\infty} d\omega f_\alpha(\hbar\omega) \Gamma_\alpha(\omega) \left\{ w \text{Im}[\mathcal{G}_{l+2,l\alpha}(n,\omega) \mathcal{G}_{l,l\alpha}^*(n,\omega)] \right. \\ &\quad \left. - \varepsilon_{l+1} \text{Im}[\mathcal{G}_{l+2,l\alpha}(n,\omega) \mathcal{G}_{l+1,l\alpha}^*(n,\omega)] \right\},\end{aligned}\quad (78)$$

where we have assumed that the position $l+1$ does not coincide with a pumping center, while for the energy current through the contact we get:

$$\begin{aligned}\bar{J}_\alpha^E &= \frac{|w_{c\alpha}|^2}{h} \sum_{k\alpha} \int_{-\infty}^{+\infty} d\omega \varepsilon_{k\alpha} 2\pi \left\{ f_\alpha(\hbar\omega) \delta(\omega - \varepsilon_{k\alpha}/\hbar) 2\text{Im}[\mathcal{G}_{l\alpha,l\alpha}(0,\omega)] \right. \\ &\quad \left. - \sum_{\beta=L,R} \sum_{n=-\infty}^{+\infty} f_\beta(\hbar\omega) \delta(\omega_n - \varepsilon_{k\alpha}/\hbar) |\mathcal{G}_{l\alpha,l\beta}(n,\omega)|^2 \Gamma_\beta(\omega) \right\} \\ &= \frac{\hbar}{2\pi} \int_{-\infty}^{+\infty} d\omega \left\{ \omega f_\alpha(\hbar\omega) \Gamma_\alpha(\omega) 2\text{Im}[\mathcal{G}_{l\alpha,l\alpha}(0,\omega)] \right. \\ &\quad \left. - \sum_{\beta=L,R} \sum_{n=-\infty}^{+\infty} \omega_n f_\beta(\hbar\omega) \Gamma_\alpha(\omega) |\mathcal{G}_{l\alpha,l\beta}(n,\omega)|^2 \Gamma_\beta(\omega) \right\},\end{aligned}\quad (79)$$

which can also be written in the symmetric form:

$$\bar{J}_\alpha^E = \frac{\hbar}{2\pi} \sum_{n=-\infty}^{+\infty} \sum_{\beta=L,R} \int_{-\infty}^{+\infty} d\omega \omega_n [f_\alpha(\hbar\omega_n) - f_\beta(\hbar\omega)] \Gamma_\alpha(\omega_n) |\mathcal{G}_{l\alpha,l\beta}(n,\omega)|^2 \Gamma_\beta(\omega). \quad (80)$$

We now go back to our heuristic argument introduced in Section IID to define the heat current. The above equation shows that for low driving, even for reservoirs at $T=0$ and very weak driving, such that $\Omega_0 \rightarrow 0$, there is a finite energy flow $\bar{J}_\alpha^E \propto \mu \bar{J}_\alpha$, with \bar{J}_α given in (67). This energy is transported by the currents from one reservoir to the other one, thus having a convective character and should be subtracted to get a heat flow.

To calculate the heat flow we multiply (66) by μ/e and subtract it to (79):

$$J_\alpha^Q = \frac{\hbar}{2\pi} \int_{-\infty}^{+\infty} d\omega \left\{ (\omega - \omega_F) f_\alpha(\hbar\omega) \Gamma_\alpha(\omega) 2\text{Im}[\mathcal{G}_{l\alpha,l\alpha}(0, \omega)] \right. \\ \left. - \sum_{\beta=L,R} \sum_{n=-\infty}^{+\infty} (\omega_n - \omega_F) f_\beta(\hbar\omega) \Gamma_\alpha(\omega_n) |\mathcal{G}_{l\alpha,l\beta}(n, \omega)|^2 \Gamma_\beta(\omega) \right\}, \quad (81)$$

where $\hbar\omega_F = \mu$. Equivalently, from (80) and (67), we can write the heat current flowing through the contact as follows:

$$J_\alpha^Q = \frac{\hbar}{2\pi} \sum_{\beta=L,R} \sum_{n=-\infty}^{+\infty} \int_{-\infty}^{+\infty} d\omega (\omega_n - \omega_F) [f_\alpha(\hbar\omega_n) - f_\beta(\hbar\omega)] \Gamma_\alpha(\omega_n) |\mathcal{G}_{l\alpha,l\beta}(n, \omega)|^2 \Gamma_\beta(\omega). \quad (82)$$

Within the scattering matrix approach, one can also calculate the heat current J_α^Q by analogy to the charge current, Eq.(68). As we already mentioned, Eq.(68) contains the difference of number of electrons with energy ε entering and leaving the scatterer through the same wire. Each of these electrons has an energy ε . Therefore, to calculate the heat current we multiply the integrand in Eq.(68) by $(\varepsilon - \mu)$, drop an electron charge e , and get:

$$J_\alpha^Q = \frac{1}{h} \int_{-\infty}^{+\infty} d\varepsilon (\varepsilon - \mu) \left\{ f_\alpha(\varepsilon) - \sum_{\beta=L,R} \sum_{n=-\infty}^{\infty} f_\beta(\varepsilon_n) |S_{F,\alpha\beta}(\varepsilon, \varepsilon_n)|^2 \right\}. \quad (83)$$

This equation is equivalent to (81) through the relation (63). Next we make shifts $\varepsilon_n \rightarrow \varepsilon$ and $n \rightarrow -n$ in the term containing $f_\beta(\varepsilon_n)$ and finally obtain:

$$J_\alpha^Q = \frac{1}{h} \int_{-\infty}^{+\infty} d\varepsilon \left\{ (\varepsilon - \mu) f_\alpha(\varepsilon) - \sum_{\beta=L,R} \sum_{n=-\infty}^{\infty} (\varepsilon_n - \mu) f_\beta(\varepsilon) |S_{F,\alpha\beta}(\varepsilon_n, \varepsilon)|^2 \right\}, \quad (84)$$

We multiply the term containing $f_\alpha(\varepsilon)$ by the identity $1 = \sum_\beta \sum_n |S_{F,\alpha\beta}(\varepsilon, \varepsilon_n)|^2$. Then we make shifts $\varepsilon_n \rightarrow \varepsilon$ and $n \rightarrow -n$ in this term and finally get:

$$J_\alpha^Q = \frac{1}{h} \sum_{\beta=L,R} \sum_{n=-\infty}^{\infty} \int_{-\infty}^{+\infty} d\varepsilon (\varepsilon_n - \mu) [f_\alpha(\varepsilon_n) - f_\beta(\varepsilon)] |S_{F,\alpha\beta}(\varepsilon_n, \varepsilon)|^2, \quad (85)$$

which, because of (63), is equivalent to (82).

5. Mean power developed by the fields

The dc power (17) done by the ac fields reads:

$$\overline{P}_l = \frac{-i}{\tau} \int_0^\tau dt \frac{dV_l(t)}{dt} G_{l,l}^<(t, t). \quad (86)$$

In terms of the representation (46) it results:

$$\overline{P}_l = \frac{\hbar\Omega_0 eV_l^0}{2\pi} \sum_{n=-\infty}^{+\infty} \sum_{\alpha=L,R} \sum_{k=\pm 1} \int_{-\infty}^{+\infty} d\omega f_\alpha(\hbar\omega) \Gamma_\alpha(\omega) \text{Im} \{ k e^{-ik\delta_l} \mathcal{G}_{l,l\alpha}(n, \omega) \mathcal{G}_{l,l\alpha}(n+k, \omega)^* \} \quad (87)$$

This expression does not have a counterpart in terms of the Floquet scattering matrix. This is because the evaluation of this quantity depends on the microscopic details included explicitly in the Hamiltonian. In fact, notice that the formula (63) relates the scattering matrix only with the Green's function with the coordinates of the central system, $l\alpha, l\beta$, that intervene in the contacts. For the same reason, we have shown in the previous section equivalent expression within both formalisms only for the currents through the contacts and not for the currents within C . Nevertheless the total power developed by all the fields can be also calculated within the scattering matrix formalism, see Eqs. (88) and (97).

E. Technical summary

To close this section we present in Figure 4 a diagram with the summary of the procedure to evaluate the different physical quantities we need to discuss the transport behavior of a quantum pump, the alternatives and the possible approximations.

IV. RESULTS AND CRITICAL DISCUSSION

In this section we apply the concepts and techniques introduced in the previous section to analyze the conservation of the energy and the different mechanisms of heat transport that we can identify in our quantum pump. On the basis of our previous definitions we can show the existence of three generic effects due to a dynamical scatterer. At any segment of the system, it is possible to verify the conservation laws introduced in section II B by numerically solving the Dyson equation for the retarded Green's functions, evaluating the relevant expectation values of observables following the indications of the diagram of Figure 4. In what follows we present analytical results based on the perturbative solution of the Green's function and the adiabatic approximation for the scattering matrix. Without the explicit evaluation of the functions $\hat{G}^{0,R}(\omega)$, which depend only on the geometric statical properties of the system, this procedure allow us to analyze the physical properties of our system within the weak driving regime.

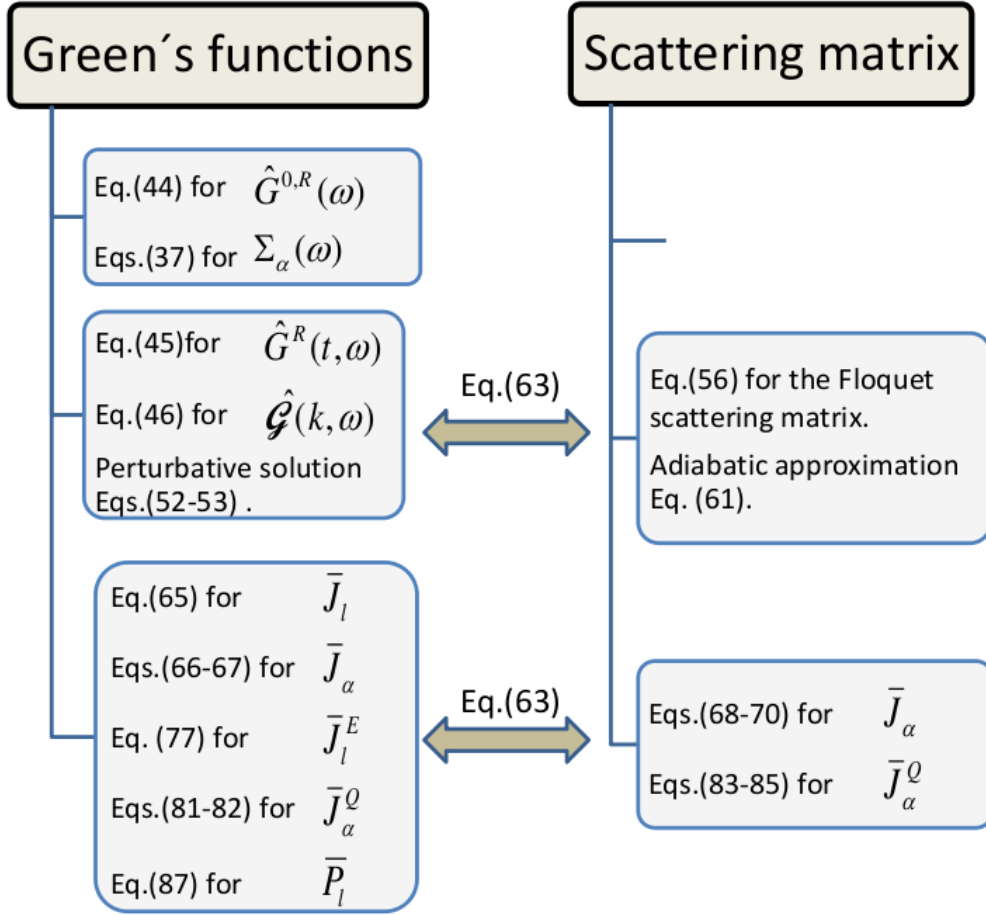


FIG. 4: Diagram summarizing the possible steps to be followed in order to evaluate particle, energy and heat currents as well as the power developed by the fields by recourse to the two formalisms presented in this chapter.

To make the effects clearer we consider the case when the two reservoirs have, not only the same electrochemical potential $\mu_\alpha = \mu$, but also the same temperature $T_\alpha = T \Rightarrow f_\alpha(\hbar\omega) = f_0(\hbar\omega), \forall \alpha$.

A. Heating of the reservoirs by the quantum pump

The first effect that takes place in our quantum engine is the heating of the reservoirs (see, e.g., Avron et al. 2001, Moskalets and Büttiker 2002, Wang and Wang 2002, Avron et al. 2004). Unlike the charge current, \bar{J}_α , the sum of heat currents in all the wires, $J_{tot}^Q = \sum_\alpha J_\alpha^Q$,

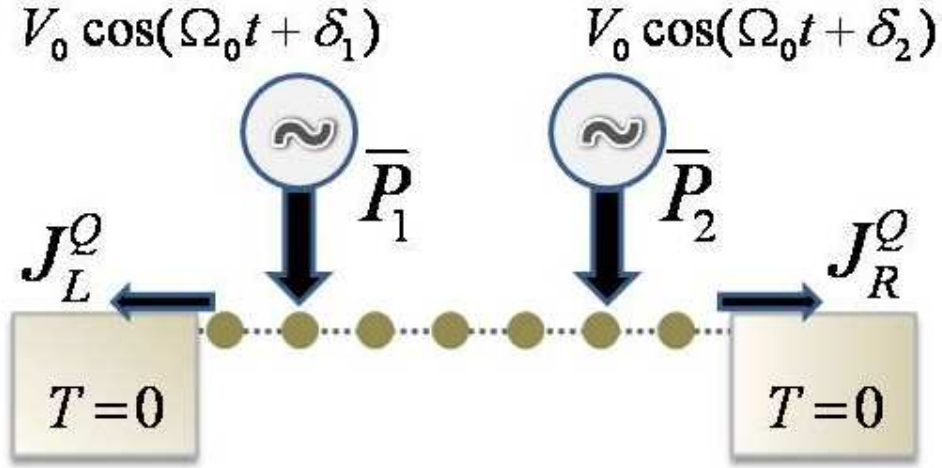


FIG. 5: Scheme of the working regime of the quantum pump when the two reservoirs are at temperature $T = 0$. All the power developed by the external fields is dissipated in the form of heat that is absorbed by the left and right reservoirs.

is non zero. According to the conservation of the energy expressed in Eq. (19), the definition of the heat current (20) and the conservation of the charge (71), it is clear that the total power developed by the fields is equal to the total heat current that enters the reservoirs:

$$\sum_{l=1}^M \bar{P}_l = - \sum_{\alpha} J_{\alpha}^Q. \quad (88)$$

For reservoirs at temperature $T = 0$ our intuition suggests us that the total power developed by the fields is fully transformed into heat which flows into the reservoirs (see Figure 5). In what follows we analyze the behavior of this flow as a function of the pumping parameters within the low driving regime. To this end, we follow an analogous procedure as in subsection III D 3, and we use perturbation theory to evaluate the powers and heat flows at the contacts.

1. Heat current at weak driving, $T = 0$

Following exactly the same lines as those presented in the derivation of (76), we start from (82), we substitute the perturbative solution of the Green's function (52) and (53) and expand in Taylor series the resulting expression up to the lowest non-vanishing order in Ω_0 .

The result is:

$$J_\alpha^Q \sim \frac{\hbar\Omega_0^2(eV_0)^2}{\pi} \sum_{j,j'=1}^M \sum_{\beta=L,R} \cos(\delta_j - \delta_{j'}) \Gamma_\alpha(\omega_F) \Gamma_\beta(\omega_F) \\ \times G_{l_\alpha,l_j}^{0,R}(\omega_F) G_{l_j,l_\beta}^{0,R}(\omega_F) \left[G_{l_\alpha,l_{j'}}^{0,R}(\omega_F) G_{l_{j'},l_\beta}^{0,R}(\omega_F) \right]^* . \quad (89)$$

The total heat flowing through the contacts reads:

$$\sum_{\alpha=L,R} J_\alpha^Q = \frac{\hbar\Omega_0^2(eV_0)^2}{\pi} \sum_{j,j'=1}^M \sum_{\beta=L,R} \cos(\delta_j - \delta_{j'}) \Gamma_\alpha(\omega_F) \Gamma_\beta(\omega_F) \\ \times G_{l_\alpha,l_j}^{0,R}(\omega_F) G_{l_j,l_\beta}^{0,R}(\omega_F) \left[G_{l_\alpha,l_{j'}}^{0,R}(\omega_F) G_{l_{j'},l_\beta}^{0,R}(\omega_F) \right]^* \\ = \frac{\hbar\Omega_0^2(eV_0)^2}{\pi} \sum_{j,j'=1}^M \cos(\delta_j - \delta_{j'}) |\rho_{l_j,l_{j'}}(\omega_F)|^2 , \quad (90)$$

where we have used the identity between equilibrium Green's functions and the definition of the matrix presented in (51). Thus, at $T = 0$ and weak driving, there is a net heat flow $\propto V_0^2 \Omega_0^2$ into the reservoirs.

2. Mean power at weak driving, $T = 0$

We now follow a similar procedure to evaluate the mean power developed by the j -th force. Substituting the perturbative solution (52) in (87), and keeping terms that contribute at $\mathcal{O}(V_0^2)$ we get:

$$\overline{P}_j \sim \frac{\hbar\Omega_0 eV_0}{\pi} \sum_{\alpha=L,R} \sum_{j'=1}^M \int_{-\infty}^{+\infty} d\omega f_\alpha(\hbar\omega) \Gamma_\alpha(\omega) \\ \times \text{Im} \left\{ e^{-i\delta_j} [\mathcal{G}_{l_j,l_\alpha}(0, \omega) \mathcal{G}_{l_j,l_\alpha}^*(1, \omega) + \mathcal{G}_{l_j,l_\alpha}(-1, \omega) \mathcal{G}_{l_j,l_\alpha}^*(0, \omega)] \right\} . \quad (91)$$

Then, replacing (53) we derive an equation with several terms which can be collected as follows:

$$\overline{P}_j = \sum_{j'=1}^M \left[\lambda_{j,j'}^{(1)} \cos(\delta_j - \delta_{j'}) + \lambda_{j,j'}^{(2)} \sin(\delta_j - \delta_{j'}) \right] , \quad (92)$$

with

$$\lambda_{j,j'}^{(1)} = \frac{\hbar\Omega_0(eV_0)^2}{\pi} \int_{-\infty}^{+\infty} d\omega f_0(\hbar\omega) \text{Im} \left\{ \gamma_{j,j'}(\omega) \gamma_{j,j'}^-(\omega) \right\} , \\ \lambda_{j,j'}^{(2)} = \frac{\hbar\Omega_0(eV_0)^2}{\pi} \int_{-\infty}^{+\infty} d\omega f_0(\hbar\omega) \text{Re} \left\{ \gamma_{j,j'}(\omega) \gamma_{j,j'}^+(\omega) \right\} , \quad (93)$$

being

$$\begin{aligned}\gamma_{j,j'}(\omega) &= \sum_{\alpha=L,R} \left[G_{l_j,l_\alpha}^{0,R}(\omega) \right]^* \Gamma_\alpha(\omega) G_{l_{j'},l_\alpha}^{0,R}(\omega) = -i\rho_{l_j,l_{j'}}^*(\omega), \\ \gamma_{j,j'}^\pm(\omega) &= G_{l_j,l_{j'}}^{0,R}(\omega + \Omega_0) \pm G_{l_j,l_{j'}}^{0,R}(\omega - \Omega_0).\end{aligned}\quad (94)$$

3. Conservation of the energy

The second term of (92) vanishes when we perform a summation over all the fields, since $\lambda_{j,j'}^{(2)}$ is symmetric under a permutation $j \leftrightarrow j'$ while $\sin(\delta_j - \delta_{j'})$ is antisymmetric under this operation. Thus, the only term contributing to the sum over all the powers is the first one, which for low Ω_0 results:

$$\begin{aligned}\lambda_{j,j'}^{(1)} &= \frac{\hbar\Omega_0(eV_0)^2}{\pi} \int_{-\infty}^{+\infty} d\omega \\ &\quad \times \text{Re} \left\{ [f_0(\hbar\omega - \hbar\Omega_0)\rho_{l_j,l_{j'}}(\omega - \Omega_0) - f_0(\hbar\omega + \hbar\Omega_0)\rho_{l_j,l_{j'}}(\omega + \Omega_0)] [G_{l_j,l_{j'}}^{0,R}(\omega)]^* \right\} \\ &\sim -\frac{2\hbar\Omega_0^2(eV_0)^2}{\pi} \rho_{l_j,l_{j'}}(\omega_F) \left[G_{l_j,l_{j'}}^{0,R}(\omega_F) \right]^*.\end{aligned}\quad (95)$$

Performing the sum over j in (92) and using $|\rho_{l,l'}(\omega)|^2 = |G_{l,l'}(\omega)|^2 + |G_{l',l}(\omega)|^2 - 2\text{Re}[G_{l,l'}(\omega)G_{l',l}(\omega)]$, we can verify the fundamental law of the conservation of the energy (88).

B. Energy exchange between external forces

The evaluation of the coefficient $\lambda_{j,j'}^{(2)}$ at weak driving can be carried out following exactly the same steps as with $\lambda_{j,j'}^{(1)}$. The result is

$$\lambda_{j,j'}^{(2)} \sim -\frac{2\hbar\Omega_0(eV_0)^2}{\pi} \int_{-\infty}^{+\infty} d\omega \text{Im} \left[G_{l_j,l_{j'}}^{0,R}(\omega) G_{l_{j'},l_j}^{0,R}(\omega) \right], \quad (96)$$

i.e. this contribution is $\propto \Omega_0$, and therefore dominates the behavior of \overline{P}_j at weak driving. Interestingly, this contribution does not exist in a configuration with a single ac field, while it can have different signs at different fields in a configuration with several pumping centers.

Therefore, we present the second general effect taking place in quantum engines: One external force can perform work directly against another external force with a negligible amount of energy being dissipated into the reservoirs. This remarkable mechanism opens

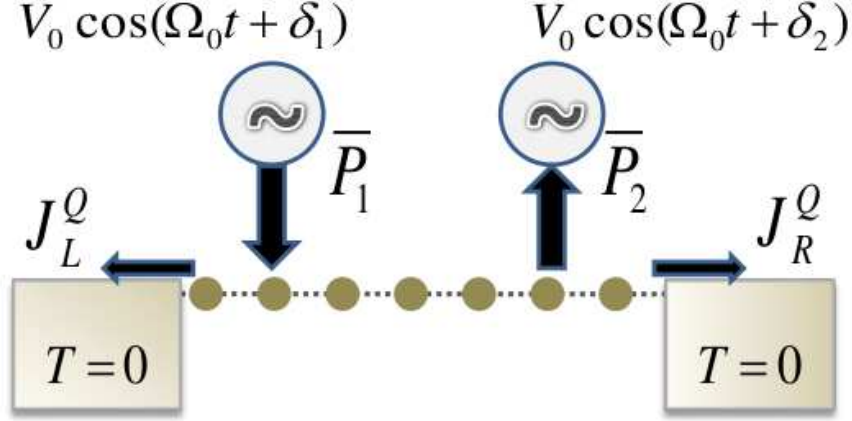


FIG. 6: Scheme of the working regime of the quantum pump when the two reservoirs are at temperature $T = 0$ and low driving: V_0 and Ω_0 small. The dissipated energy flowing into the reservoirs is low, while it is possible that part of the work done by one of the ac fields is coherently transferred to the the other one, which receives the ensuing energy.

the possibility of the coherent energy transfer between pumping centers as indicated in Figure 6.

C. Directed heat transport at finite temperature

To show that the dynamical scatterer can induce a directed heat transfer between the reservoirs we, first, calculate the total generated heat $J_{tot}^Q = \sum_{\alpha} J_{\alpha}^Q$. Summing up Eq. (84) over α we find (for $f_{\alpha} = f_0, \forall \alpha$):

$$J_{tot}^Q = -\frac{\Omega_0}{2\pi} \sum_{\alpha=L,R} \sum_{\beta=L,R} \sum_{n=-\infty}^{\infty} \int_{-\infty}^{\infty} d\varepsilon f_0(\varepsilon) n |S_{F,\alpha\beta}(\varepsilon_n, \varepsilon)|^2. \quad (97)$$

The part of the total generated heat which flows into wire α , $J_{tot}^Q = \sum_{\alpha} J_{\alpha,gen}^Q$, can be defined as follows:

$$J_{\alpha,gen}^Q = -\frac{\Omega_0}{2\pi} \sum_{\beta=L,R} \sum_{n=-\infty}^{\infty} \int_{-\infty}^{+\infty} d\varepsilon f_0(\varepsilon) n |S_{F,\alpha\beta}(\varepsilon_n, \varepsilon)|^2. \quad (98)$$

The remaining part of the heat flowing into wire α , $J_{\alpha,pump}^Q = J_{\alpha}^Q - J_{\alpha,gen}^Q$, is:

$$J_{\alpha,pump}^Q = \frac{1}{h} \int_{-\infty}^{+\infty} d\varepsilon (\varepsilon - \mu) f_0(\varepsilon) \left\{ \sum_{\beta=L,R} \sum_{n=-\infty}^{\infty} |S_{F,\alpha\beta}(\varepsilon_n, \varepsilon)|^2 - 1 \right\}. \quad (99)$$

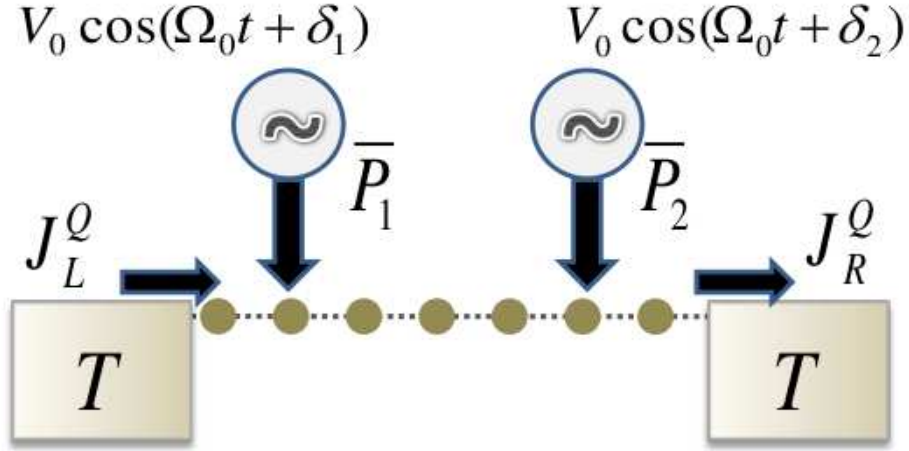


FIG. 7: Scheme of the working regime of the quantum pump when the two reservoirs are at a finite temperature T . There is a net pumping of heat from the one reservoir to the other. The quantum pump, thus works as a refrigerator.

Using the unitarity condition for the Floquet scattering matrix, Eq. (57), one can easily show that the part of the heat current $J_{\alpha,pump}^Q$ satisfies the conservation law similar to the one for the charge dc current, Eq. (71):

$$\sum_{\alpha=L,R} J_{\alpha,pump}^Q = 0. \quad (100)$$

This means that $J_{\alpha,pump}^Q$ is transported from one reservoir to another one with the help of a dynamical scatterer. By analogy with the corresponding charge current we identify this portion of the total heat as a pumped heat (hence the lower index “*pump*”). This is the third general effect we identified in our quantum engine: The dynamical scatterer induces a directed heat transport between the reservoirs (see, e.g., Humphrey et al. 2001. Segal and Nitzan 2006, Arrachea et al. 2007, Rey et al. 2007, Martinez and Hu 2007).

If the pumped heat is, for instance, negative in the L wire, $J_{L,pump}^Q < 0$, then it is necessarily positive in another wire, $J_{R,pump}^Q > 0$. If the absolute value of this heat is larger than the one of the generated component $J_{R,gen}^Q$, then the whole heat flowing into the R wire is positive, i.e. directed from the reservoir to the central system, $J_R^Q = J_{R,gen}^Q + J_{R,pump}^Q > 0$. In this case the reservoir R will be cooled while L will be heated.

The splitting of J_{α}^Q into $J_{\alpha,gen}^Q$ and $J_{\alpha,pump}^Q$ helped us to show that J_{α}^Q can be positive.

Strictly speaking, such a splitting is not unique and only the whole heat current J_α^Q has a direct physical meaning. However at slow driving, one can support such a decomposition of J_α^Q into the generated and the pumped heat by additional physical arguments as follows.

1. Adiabatic heat currents

The expansion (61) allows us to calculate the heat flow with an accuracy of $\mathcal{O}(\Omega^2)$. To show it explicitly we rewrite slightly Eq. (84) (with $f_\alpha = f_0, \forall \alpha$). We assume $k_B T \gg \hbar \Omega_0$ and expand the difference of Fermi distribution functions in (85) in powers of Ω_0 , use Eq. (61) and find from Eq. (85) the heat current, $J_\alpha^Q = J_\alpha^{Q,(1)} + J_\alpha^{Q,(2)} + \mathcal{O}(\Omega_0^3)$, where

$$J_\alpha^{Q,(1)} = -\frac{1}{2\pi} \int_{-\infty}^{+\infty} d\varepsilon (\varepsilon - \mu) \left(-\frac{\partial f_0}{\partial \varepsilon} \right) \int_0^\tau \frac{dt}{\tau} \text{Im} \left(\hat{S}(t, \varepsilon) \frac{\partial \hat{S}^\dagger(t, \varepsilon)}{\partial t} \right)_{\alpha\alpha}, \quad (101)$$

$$J_\alpha^{Q,(2)} = -\frac{\hbar}{4\pi} \int_{-\infty}^{+\infty} d\varepsilon \left(-\frac{\partial f_0}{\partial \varepsilon} \right) \int_0^\tau \frac{dt}{\tau} \left(\frac{\partial \hat{S}(t, \varepsilon)}{\partial t} \frac{\partial \hat{S}^\dagger(t, \varepsilon)}{\partial t} \right)_{\alpha\alpha} - \frac{1}{2\pi} \int_{-\infty}^{+\infty} d\varepsilon (\varepsilon - \mu) \left(-\frac{\partial f_0}{\partial \varepsilon} \right) \int_0^\tau \frac{dt}{\tau} \text{Im} \left(2\Omega_0 \hat{A}(t, \varepsilon) \frac{\partial \hat{S}^\dagger(t, \varepsilon)}{\partial t} \right)_{\alpha\alpha}. \quad (102)$$

Next we split the heat current into the generated heat and the pumped heat as follows,

$J_\alpha^Q = J_{\alpha,gen}^Q + J_{\alpha,pump}^Q$, with

$$J_{\alpha,gen}^Q = -\frac{\hbar}{4\pi} \int_{-\infty}^{+\infty} d\varepsilon \left(-\frac{\partial f_0}{\partial \varepsilon} \right) \int_0^\tau \frac{dt}{\tau} \left(\frac{\partial \hat{S}}{\partial t} \frac{\partial \hat{S}^\dagger}{\partial t} \right)_{\alpha\alpha}, \quad (103)$$

$$J_{\alpha,pump}^Q = -\frac{1}{2\pi} \int_{-\infty}^{+\infty} d\varepsilon (\varepsilon - \mu) \left(-\frac{\partial f_0}{\partial \varepsilon} \right) \int_0^\tau \frac{dt}{\tau} \text{Im} \left(\left[\hat{S} + 2\hbar\Omega_0 \hat{A} \right] \frac{\partial \hat{S}^\dagger}{\partial t} \right)_{\alpha\alpha}. \quad (104)$$

Notice that these equations also remain valid at ultralow temperatures, $k_B T \ll \hbar \Omega_0$, which can be verified by direct calculations taking into account the energy-independence of the matrices \hat{S} and \hat{A} over a scale of order Ω_0 , i.e. over the region of the thermal widening of the edge of the Fermi distribution function.

The above given splitting is justified by the following observations. (i) The quantity $J_{\alpha,gen}^Q$ is negative in each wire α as it should be for the heat generated by the scatterer and flowing into the reservoirs. (ii) At zero temperature the pumped heat vanishes identically, $J_{\alpha,pump}^Q = 0$, since it is impossible to take heat out of the system kept at zero temperature. To prove

the first observation we show that the integrand in Eq. (103) is positive. To this end we use the Fourier transformation and get, $1/\tau \int_0^\tau dt (\partial \hat{S}/\partial t \partial \hat{S}^\dagger/\partial t)_{\alpha\alpha} = \Omega_0^2 \sum_\beta \sum_n n^2 |S_{\alpha\beta,n}|^2 > 0$. The second observation follows from the fact that at zero temperature it is $(\varepsilon - \mu) \partial f_0/\partial \varepsilon = 0$, hence the equation (104) vanishes. Note that the conservation of the pumped heat current, $\sum_\alpha J_{\alpha,pump}^Q = 0$, directly follows from the conservation of charge currents, Eqs.(72) and (73), which implies $1/\tau \int_0^\tau dt \text{ImTr} \left[\hat{S} + 2\hbar\Omega_0 \hat{A} \right] \partial \hat{S}^\dagger/\partial t = 0$.

From Eq.(103) it follows that the adiabatic scatterer heats the reservoirs with a rate proportional to $\hbar\Omega_0^2$ (Avron et al. 2001). In contrast, the pumped heat, Eq. (104), is rather proportional to $k_B T \Omega_0$. At sizable temperatures, $k_B T \gg \hbar\Omega_0$, the amount of pumped heat can exceed the generated heat, $|J_{\alpha,pump}|/J_{\alpha,gen} \sim k_B T/(\hbar\Omega_0) \gg 1$. Therefore, if in the wire α we have $J_{\alpha,pump} > 0$, then the reservoir α will be cooled (see Figure 7). This mechanism opens the possibility of using quantum pumps as refrigerators.

V. SUMMARY

In this chapter we have introduced the basic concepts to analyze at the microscopic level the energy transport in quantum systems driven by harmonically time-dependent fields. We have introduced a simple microscopic model for a quantum pump, which consists in a finite structure connected to two macroscopic reservoirs, with ac local fields that oscillate in time with the same frequency and a phase lag. We have analyzed the fundamental conservation laws for the charge and the energy and we have defined the basic concepts to study the transport behavior in these systems: charge currents, energy currents, heat currents and powers developed by the fields. We have reviewed two complementary techniques to calculate the currents and the powers: the non-equilibrium Green's function formalism for harmonically time-dependent Hamiltonians and the scattering formalism for periodically driven mesoscopic systems. We have shown that the two approaches are equivalent for the evaluation of the charge and heat currents through the contacts between the driven system and the reservoirs. We have also introduced two approximations: the adiabatic approximation to the Floquet scattering matrix and a perturbative solution of the Dyson's equations for the Green's functions valid within the weak driving regime. Both techniques are important to draw conclusions on general features of the transport behavior without the explicit evaluation of the Green's functions or the scattering matrix elements. Such conclusions are, thus,

generic and do not depend on the geometrical details of the driven structure. A summary of the technical details, including the main equations and the alternative routes to evaluate them exactly or in an approximate way is given in a diagram at the end of section III.

Finally, in section IV we have applied the concepts and tools we have introduced in the previous sections in order to discuss three important mechanisms of energy transport in quantum pumps. The first one is the fact that the total work done by all the local fields is dissipated in the form of heat that flows to the reservoirs. This effect is rather expected. In any case, we have exploited our theoretical techniques at weak driving to evaluate term by term powers and heat currents and explicitly verify the conservation of the energy. To unveil a fundamental law is always a beautiful result in theoretical Physics and an important support for the power of a theoretical tool. In addition we have shown that other two less expected and subtle transport mechanisms can take place: the coherent transport of energy allowing for regimes where some of the forces make work, while other receive work. This interesting mechanism could be exploited, for instance, to couple two quantum pumps in a combined engine. The final remarkable mechanism is the pumping of heat at finite temperature and weak driving, allowing for the operation of the quantum pump as a refrigerator which extracts heat from a reservoir and injects heat in the other one.

VI. FUTURE PERSPECTIVE

The different operational regimes that we have identified in the quantum pumps have several important outcomes. On the theoretical side there are several lines to further analyze. A first issue to explore is the role of the geometrical details of the structure, in order to identify the optimal architecture to enhance each mechanism and improve the efficiency of the quantum engine. Another important ingredient is the investigation of the role of many-body interactions. In particular, the electron-electron and the electron-phonon interactions. On the experimental side it would be very interesting the design of an experimental setup to implement these effects. In this sense, it is very promising that quantum refrigeration has been already experimentally explored in mesoscopic structures with superconducting elements under ac driving [Giazotto 2006].

VII. ACKNOWLEDGMENTS

We thank Luis Martin-Moreno for useful discussions and C. Marcus for Figure 1. LA acknowledges support from CONICET and UBACyT, Argentina.

VIII. BIBLIOGRAPHY

Arrachea, L. 2002. Current oscillations in a metallic ring threaded by a time-dependent magnetic flux. *Physical Review B* 66: 045315 (11).

Arrachea, L. 2005. A Green-function approach to transport phenomena in quantum pumps, *Physical Review B* 72: 125349 (11).

Arrachea, L. and Moskalets, M. 2006. Relation between scattering matrix and Keldysh formalisms for quantum transport driven by time-periodic fields. *Physical Review B* 74: 245322 (13).

Arrachea, L., Moskalets, M., and Martin-Moreno, L. 2007. Heat production and energy balance in nanoscale engines driven by time-dependent fields. *Physical Review B* 75: 245420 (5).

Avron, J. E., Elgart, A., Graf, G. M., and Sadun, L. 2001. Optimal Quantum Pumps. *Physical Review Letter* 87: 236601 (4).

Avron, J. E., Elgart, A., Graf, G. M., and Sadun, L. 2004. Transport and Dissipation in Quantum Pumps. *Journal of Statistical Physics* 116: 425 - 73.

Brouwer, P. W. 1998. Scattering approach to parametric pumping. *Physical Review B* 58: R10135 - 8.

Büttiker, M. 1990. Scattering theory of thermal and excess noise in open conductors. *Physical Review Letter* 65: 2901 - 4.

Büttiker, M. 1992. Scattering theory of current and intensity noise correlations in conductors and wave guides. *Physical Review B* 46: 12485 - 507.

Büttiker, M. 1993. Capacitance, admittance, and rectification properties of small conductors. *Journal of Physics: Condensed Matter* 5: 9361 - 78.

Büttiker, M., Thomas, H., and Prêtre, A. 1994. Current partition in multiprobe conductors in the presence of slowly oscillating external potentials. *Zeitschrift für Physik B Condensed Matter* 94: 133 - 7.

- Caroli, C, Combescot, R., Nozieres, P. and Saint-James, D. 1971. Direct calculation of the tunneling current. *Journal of Physics C: Solid State Physics* 4: 916 - 929.
- Fisher, D. S. and Lee, P. A. 1981. Relation between conductivity and transmission matrix. *Physical Review B* 23: 6851 - 4.
- Giazotto, F., Heikkila, T.T., Luukanen, A., Savin, A.M., Pekola, J.P. 2006. Opportunities for mesoscopies in thermometry and refrigeration: Physics and applications. *Rev. Mod. Phys.* 78: 217 - 274.
- Haug, H. and Jauho, A. P. 1996. *Quantum Kinetics in Transport and Optics in Semiconductors: Springer Solid-State Sciences* 123.
- Humphrey, T. E., Linke, H., and Newbury, R. 2001. Pumping heat with quantum ratchets. *Physica E* 11: 281 - 6.
- Kadanoff, L. P, Baym, G. 1962. *Quantum statistical mechanics: Benjamin/Cummings Publishing Group USA.*
- Keldysh, L. V. 1964. Diagram technique for nonequilibrium processes. *Zh. Eksp. Teor. Fiz.* 47: 1515 - 27.
- Kohler, S., Lehmann, J., Hänggi, P. 2005. Driven quantum transport on the nanoscale. *Physics Reports* 406: 379 - 443.
- Jauho, A. P., Wingreen, N, and Meir, Y. 1994. Time-dependent transport in interacting and noninteracting resonant-tunneling systems. *Physical Review B* 50: 5528 - 44.
- Landauer, R. 1957. Spatial Variation of Currents and Fields Due to Localized Scatterers in Metallic Conduction. *IBM Journal of Research and Development* 1: 223 - 31.
- Landauer, R. 1970. Electrical resistance of disordered one-dimensional lattices. *Philosophical Magazine* 21: 863 - 7.
- Landauer, R. 1975. Residual Resistivity Dipoles. *Zeitschrift für Physik B Condensed Matter* 21: 247 - 54.
- Mahan, G. D. 1990. *Many Particle Physics.* New York: Plenum.
- Martinez, D. F. and Hu, B. 2007. Operating molecular transistors as heat pumps. arXiv:0709.4660v1.
- Moskalets, M. and Büttiker, M. 2002a. Dissipation and noise in adiabatic quantum pumps. *Physical Review B* 66: 035306 (9).
- Moskalets, M. and Büttiker, M. 2002. Floquet scattering theory of quantum pumps. *Physical Review B* 66: 205320 (10).

- Moskalets, M. and Büttiker, M. 2004. Adiabatic quantum pump in the presence of external ac voltages. *Physical Review B* 69: 205316 (12).
- Moskalets, M. and Büttiker, M. 2005. Magnetic field symmetry of pump currents of adiabatically driven mesoscopic structures. *Physical Review B* 72: 035324 (11).
- Pastawski, H. 1992. Classical and quantum transport from generalized Landauer-Büttiker equations. II. Time-dependent resonant tunneling, *Physical Review B* 46: 4053 - 70.
- Platero, G. and Aguado, R. 2004. Photon-assisted transport in semiconductor nanostructures. *Physics Reports* 395: 1 - 157.
- Rey, M., Strass, M., Kohler, S., Hänggi, P., and Sols, F. 2007. Nonadiabatic electron heat pump. *Physical Review B* 76: 085337 (4).
- Schwinger, J. 1961. Brownian Motion of a Quantum Oscillator. *Journal of Mathematical Physics* 2: 407 - 432.
- Segal, D., Nitzan, A. 2006. Molecular heat pump. *Physical Review E* 73: 026109 (9).
- Wang, B., Wang, J. 2002. Heat current in a parametric quantum pump. *Physical Review B* 66: 125310 (4).