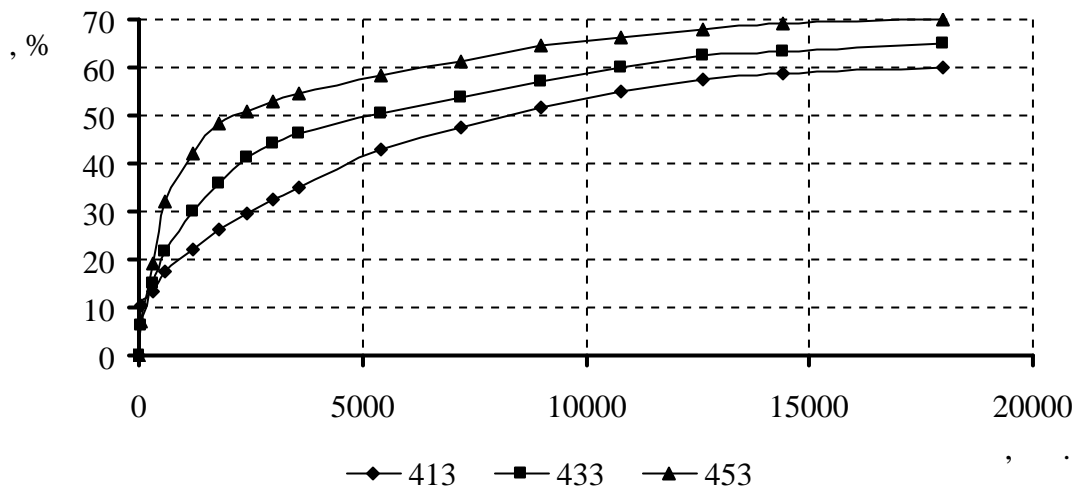


R - C₁₇H₃₅

R_x - -N-(CH₂CH₂OH)₂

R' - C₁₆H₃₃

, , () , 413 , 433 , 453 1:1. .1 (, %). (.1), 2- [4]. .2.



.1 - 1:1 1 1:1

(),	, k·10 ⁻² , ⁻¹ · ⁻¹
413	9,7
433	16,7
453	23,5

