

100 ° /

1 ° /

100 ° /

0 ° /

-10 -45 ° ,

-3 -35 ° /

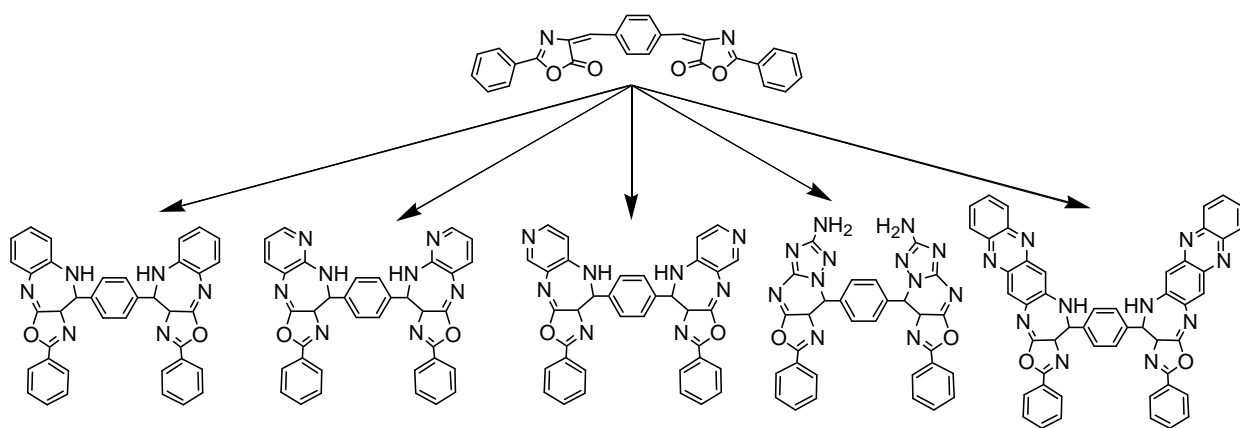
=1 ° / 100

-27,5 ° -19 ° .

- : 1. // 92/ .- .,2006. - .
- 81-85. 2. « », 2005.- 325 .
3. *Leibo S.P. , McGrath J.J., Cravalco E.G.* Microscopic observation of intracellular ice formation in mouse ova as a function of cooling rates.// *Cryobiology.*- 1975.- N12.- p. 579-587.

: 547.787.2.07:535.37:542.953

_____ , . . . , . . . , . . .



57.08:579.252.55