

W-Re-

HF HNO₃

(U<0);

(F<0);

40 – 50 ° ,

100 – 150

85 – 90 %.

100 %.

W-Re-

621.35

399 °)

9 / .

(245 am)
399 ° .
(316 °),

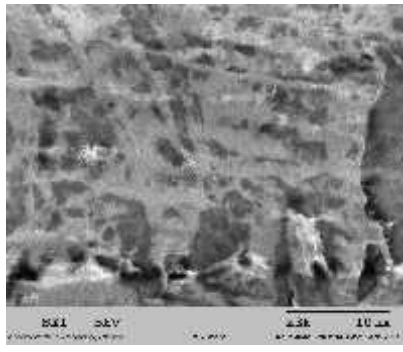
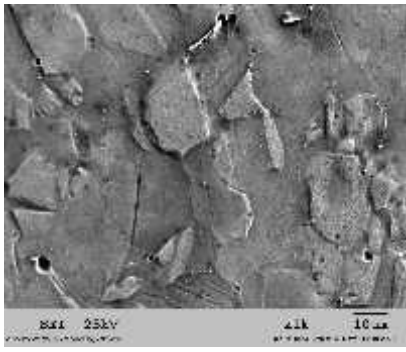
(

.1

,25 /

14 /
 $y=1/2 \cdot \pi \cdot f \cdot Cs$ $x=Rs$

7 /
7,25 22 ° .



. 1.

– 350 ° , 16,5 :
 (1000); – 2000 .

1)

2)

3)

«

»